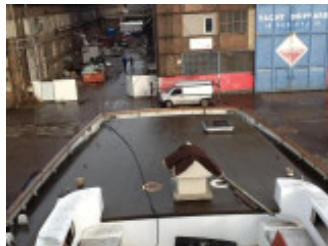
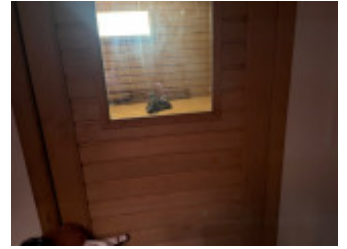
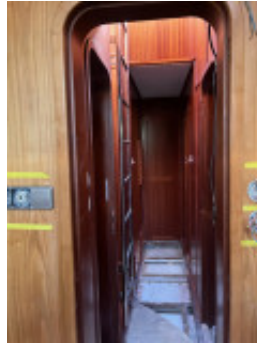
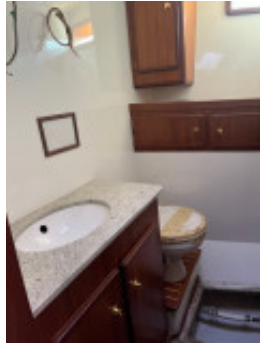


Ketsch

S.M. Europe (PL), Sail, Second-hand yacht, Polen Gdansk

€ 450.000,-





Details

Year built: 2002
 Launching: 0
 Condition: good
 Length: 26,00 m
 Beam: 6,00 m m
 Draught: 3.20 m
 Free-board: 2,10
 Weight: 75,000 kg
 Material Hull: Steel
 Material Assembly: Steel
 Rig: ALU
 Sail surface: 300 qm qm
 Drive:
 Engine type: -MTU Neu
 Number of engines: 1
 Fuel type: Diesel
 HP/kW: 300 / 221
 Steering: Cable steering
 Fresh water tank: 2500 l
 Holding tank: 400 l
 Fuel: 600 l
 Cabins: 5
 Bunks: 11
 Number of extra bunks: 2
 Head room/wet lockers: 5
 Ship's steering: Hydraulic steering
 Previous owners: 1 previous owner

Equipment

Fixtures & Cabin Layout

Aft cabin, Bow cabin, Owner's cabin, Individual seats at the front, Guest cabin, Interior navigation station, Wheel house, Salon, Teak on walkway, Teak bow, Teak in cabin

Pantry

Freezer, Stove, Refrigerator

Technology

220V socket, Anchor

Sails

Back stay tension, Aluminum boom, Boomvang, Mizzen, Head Sail, Genoa, Main sail, Ketch

Description

Contact



Vendor: commercial

S.M. Europe Ltd

Herr Michael Chacewicz

Phone: +49.(0)42170 5000 21

Fax: +49.(0)42170 5000 24

Mobile: +49(0)170 / 3107896

https://www.boatnet.de/data/liste_yacht.php?lang=de&maklerid=123&was=mschacewicz@aol.com