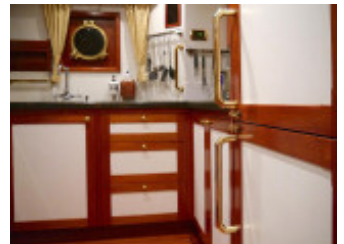


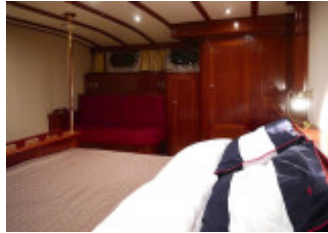
De Alm Delfino 72

de Alm (NL), Power, Second-hand yacht, Montenegro infos auf Anfrage

€ 1.650.000,-

EU taxed - no, VAT can't be stated separatly, VAT not paid, VAT exclusive





Details

Year built: 2013
Launching: 0
Condition: well-kept
Length: 22,50 m
Beam: 6,20 m m
Draught: 1.75 m
Material Hull: GRP
Material Assembly: GRP
Engine type: Iveco NEF 400-6
Number of engines: 2
Fuel type: Diesel
HP/kW: 2 / 2
Operating hours: 2800
Fresh water tank: 1250 l
Fuel: 17900 l
Cabins: 3
Bunks: 6
Number of extra bunks: 1
Head room/wet lockers: 0

Equipment

Fixtures & Cabin Layout

Second helm station on fly bridge, Aft cabin, Bow cabin, Owner's cabin, Fly bridge, Guest cabin, Equipment rack, Interior navigation station, Crew cabin, Salon, Teak swimming platform, Teak flybridge, Teak cockpit

Accessories

Shipyard De Alm
Boat Year 2013
Engines 2 x 400 hp Iveco NEF 400-6
Engine Hours 2800
VAT Status not paid
2
Length, m 22.50
Length, ft 74
Beam, m 6.20
Beam, ft 20
Draft, m 1.75
Fuel Tanks 17900
Water Tanks 1250
Guest Cabins 3
Crew Cabins 1
Hull Material Steel
Hull Type Displacement
Location Montenegro
Flag Cook Islands

- 1 meter extension, hull, superstructure and flybridge deck
- Euro transom version with 1500mm swimming platform
- Extra fuel tank about 5.600 l
- 2 stainless steel anchor boxes
- Open stairs stainless steel from the aft deck to the flybridge with hatch and railings
- 2 gates in the bulwark at the aft deck
- Fixed aluminium Bimini top painted in the colour of the ship
- Hydraulic stabiliser system Naiad zero speed capability
- Hydraulic bow and stern thruster installed with remote controls
- 4 x hydraulic capstans Hydrosta 900 stainless steel
- 2 x hydraulic winches
- Generator Whisper Ultra 24kW with water separator
- Hydraulic deck crane 600 kg on flybridge
- Watermaker 440 l/h
- Besenzoni hydraulic gangway telescopic
- Complete air system delta T 15 degrees down maximum (CLIMMA) with compressor module CWS, 10 fancoils
- 2 sets of battery chargers
- Battery set 24V/1650 Amp

3

- Mastervolt inverter 24/10
- Plasma TV 42 inches with hi-lo
- Radio/CD players in salon, fly and aft deck with speakers
- Satellite TV dish KVH Tracvision M7
- Searchlight
- Shore power connections
- Underwater lighting around the swimming platform x 4
- 5 x Beo Sound 8 iPod docking systems
- TV on owners and VIP cabins
- Navigation system: Autopilot Raymarine P 70 R, 2 x Raymarine VHF ray 240, Intercom, windset, compass, Epirb, Radar, 3 x 17 inches displays at the main station + 2 x 15 inches at flybridge, AIS, GPS, camera night and day lights, 7 x camera CAM 100
- Electric oven bosch
- Winecooler
- Dishwasher
- Floor heating
- Big U-shaped sofa on fly with fixed table
- Kitchen equipment on flybridge with sink, refrigerator, ice maker, big grill
- Shower on swimming platform
- Teak on main deck, flybridge, swimming platform
- Minibar at the aft deck with fridge
- Teak table on flybridge

Description

Contact



Vendor: commercial

bcm-yachtsales GmbH

Herr Dirk Michels

Phone: +49.(0)251 / 39 46 92 39

Fax: +49.(0)251 / 39 46 92 35

Mobile: +49.(0)151 / 14 23 53 23

<https://www.bcm-yachtsales.de>

info@bcm-yachtsales.de