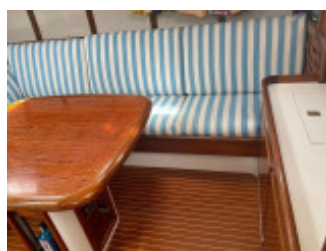
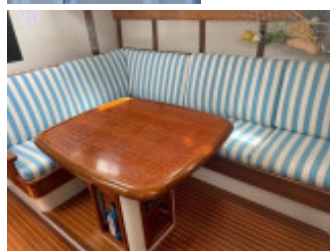
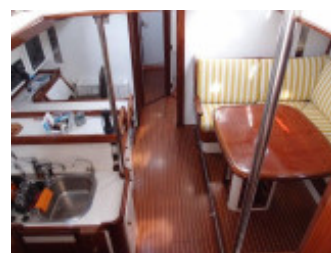


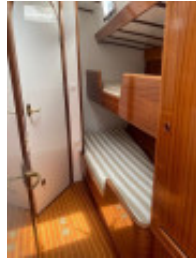
# Dehler Kalb 55

Dehler Yachtbau (DE), Segelyacht, Gebrauchyacht, NL onbekend

€ 299.000,-

MwSt. inklusiv





## Details

Baujahr: 2001  
 Erstwasserung: 0  
 Länge: 16,50 m  
 Breite: 4,50 m m  
 Tiefgang: 2.30 m  
 Stehhöhe: 2.05  
 Material Rumpf: Holz  
 Motortyp: Yanmar  
 Motoranzahl: 1  
 PS/kW: 85 / 63  
 Kabinen: 3  
 Kojen: 6  
 WC/Nasszelle: 0  
 Trailer: ohne Trailer

## Ausstattungen

### Pantry

Backofen

### Technik

Anker, Batterieladegerät, Generator, Solaranlage zum Batterieladen

### Navigation

Autopilot, Echolot, GPS, Kartenplotter, Kompass, Radar, Sumlog, UKW-Funk, Windmessenanlage

### Sicherheit

EPIRB

### Planen & Persenninge

Sprayhood

### Zubehör

CD-Player, Davits, DVD-Player, Farb-TV, Radio

# Beschreibung

Very exclusive yacht, built to a high standard. Fantastic long distance yacht. Kalb 55 sailing yacht, built in Germany to a very high standard. Many recent upgrades incl. new engine 2020. More than 300k euros invested since 2019. Amazing blue water yacht, easy handling also with small crew or single handed. Please ask for full details. Viewing by appointment.

GeneralHull shape: round bilged, deep shapeRudder: Steel rudder with skeg. Becker rudder. Balanced.Steering system: wheel, hydraulicWindows: Goyot hatchesDisplacement: appr. 20.000Ballast: appr. 6.500 kg leadVertical clearance: appr. 23 mOther: Very exclusive one off, built to a high standard. First water landing in 2013 and rigged summer 2014 for the 1st time. Owner startet building process in 1983. Hull was built by professional company (Sommerfeld in germany, in those days the best name in germany for wooden hulls). 35 mm moulded Sipo mahogany with 2 layer roving / epoxy. This yacht was built for long distance cruising with small crew and live aboard. Installations and detail work are of best quality (Becker rudder, Proctor mast, Reckmann headsail furlers, Beilken sails, KVH electronics, later B&G, and more). The interior is very light, with cabin heights more than 2 m in almost all areas. Very nice woodwork quality. Lot of storage room. Passage way under deck appr. 1,70 m. Washing machine, dryer, cooker with gas and 220V. Very huge head. No head in aft cabin, there is only a toilet in the engine room. But aft cabin is very huge, it's possible to install an separate head there.

AccommodationMaterial, colours: Mahogany high gloss. Bulkheads Sipo mahogany white.Cabins: 3 + salonBerths: 6Headroom: 2 mCooker & fuel: Miele, 2 burner gas, 2 burner ceramicShortwave radio: Icom / Pactor modemEngine, electrics, waterPower: 85 hpFuel tanks: appr. 650 l, stainl steel tank with inspection hatch. Day tank appr. 60 l with double filters and view glass.Propulsion: Prowell 35 mm shaft. Hurth HBW 250 gearboxControl panel: PhilippiDynamo: 120A / 28VSolar panel: 6 panels, appr. 4 kw (2021)Water system: 2 - 4 bar. Seewaterpump.Hot water: 80 l (2020)Water tank & material: Port side appr. 660 l, stb side appr. 980 l. Stainl. steel tanks wit inspection portsWaste water tank: PE, appr. 110 lWater maker: appr. 80 l (2020)Other: Batteries: Service Lithium Lifepro4 800 AH 24 V (2021). Engine Batterie AGM 110 AH 12 V (2020). Bow Truster Batteries 150 AH 24 V (2019). Generator Batteries 55 AH 12 V (2020). Charger and Inverter Victron 5000. Batterie and Energy Monitor Phillipi/Victron.

Rig and sailsSailplan type: Masthead rigged, cutter type with backstaysSpars, stays: Proctor 3 spreader alu mast 20,5 m length. Dyform standing rigging 10/ 12 mmWinches: Lewmar. Hydraulic central winch + 9 ST winches, between 65' and 16'. 2 and 3 speed.Sails material: Dacron sails in very good quality form Beilken (D). Appr. 20 years old, but 2014 rigged for the 1st time. Genoa: (yankee) Quadracot 80 sqm, 330/280 g, UV protection. Genua II from 2021Genoa reefing system: Seldén electric (2021 nieuw). Original Reckmann 2000/30 stored at sailmaker in Heiligenhafen. Jib: Furlin jib 34,50 sqm. 450 g. UV protectionFurling foresail: Reckmann 2000/20Other: Hydraulic back-, baby and cutterstay. NAVTEC Boomvang. Mast steps foldaway. Winches Lewmar: 2 electr., 1 hydraulic central winch, 2 x ST65, 3 x ST 48, 1 St16.

Navigation and electronicsOther: Original KVH electronics, changed to B&G electronics in 2019 with 7 Triton-3 displays.

EquipmentAnchor windlass: Front and aft Lewmar hydraulicDavits: Strong versionOther: Hydrovane self steering system (2020). Bow anchor with chain 13 mm / 80 m. Stern anchor with cahin 60 m. More equipment.

## Kontakt



Verkäufer: gewerblich

**Sailing World Yacht Brokers**

Werner Höner

Telefon: +49.(0)436290 05 93

Telefax: +49.(0)436256 32

Mobil: +49.(0)170 / 541 65 55

<http://www.sailingworld.eu>  
[info@sailingworld.eu](mailto:info@sailingworld.eu)

---

© BoatNet 1996-2024 <https://www.boatnet.de/>