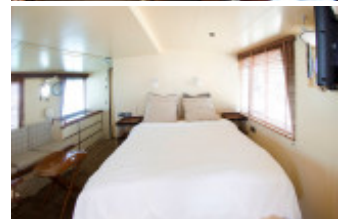
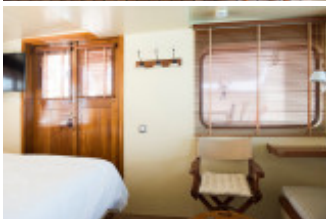
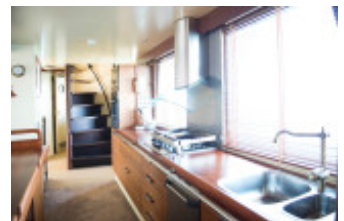
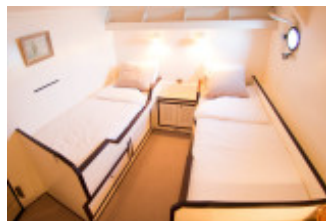
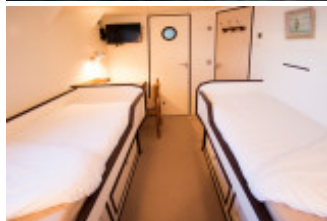
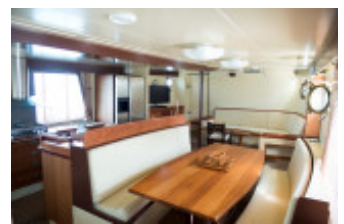


# DUTCH GENTLEMAN EXPLORER (New price)

Motore, Yacht di seconda mano, Spanien Torredembarra

€ 640.000,-

Tassazione UE, VAT paid, IVA inclusa





## Dettagli

Anno di costruzione: 1963  
Varo: 0  
Lunghezza: 25,42 m  
Larghezza: 6,22 m m  
Pescaggio: 2,80 m  
Peso: 160600 kg  
Materiale Scafo: Acciaio  
Materiale Struttura: Acciaio  
Tipo motore: Catarpillar 3408 DI-TA(2017 überholt)  
Numero di motori: 1  
Tipo di carburante: Diesel  
CV/kW: 407 / 299  
Ore di esercizio: 150  
Serbatoio acqua dolce: 13000 l  
Cabine: 5  
Cuccette a castello: 10  
Area WC/Locale igienico-sanitario: 0

## Attrezzatura

## Descrizione

The fishing cutter Zeewoelf was built in 1960. After a long adventurous career in the north sea which included guarding oil rigs, Zeewoelf was converted from a commercial vessel to a cruising motor yacht in 2002. In 2012 she was bought by the current owner. He sailed her down to the Med for an extensive refit, making her more comfortable for living and entertaining as well as giving her more autonomy through the addition of solar panels, water maker and updated navigation systems. In 2014 Zeewoelf crossed the Atlantic. Sailing via Gibraltar and the Canaries to St Maarten and returning to the western Med via the Azores she proved herself as a seaworthy, competent vessel capable of long cruising periods without need of ports and of excellent economy under her reliable 407 hp Caterpillar engine that uses just 17 litres per hour at 7 knots. Zeewoelf provides exceptional comfort and peace of mind for long sea voyages, short hops between islands or length stays in idyllic anchorages.

## Contatto



Venditore: commerciale  
**Elbe 1 Yachtkontor**

Frau Birgit Henrichsen  
Telefono: +49 40 419 22902  
Mobile: +49 172 415 29 63

<https://www.elbe1yachtkontor.com/>  
henrichsen@elbe-1.com

---

© BoatNet 1996-2026 <https://www.boatnet.de/>