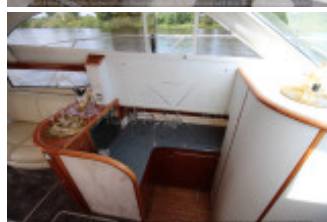
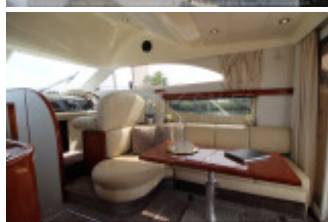
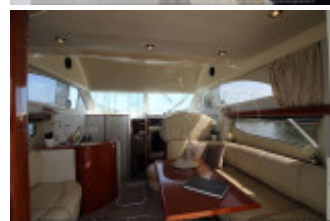


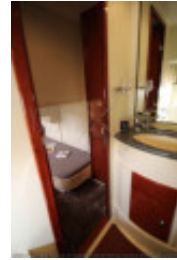
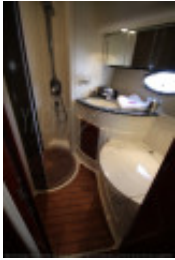
# Fairline Phantom 38 Fly (New)

Fairline (GB), Power, Second-hand yacht, Niederlande Nähe Venlo

€ 189.000,-

EU taxed, VAT can't be stated separately, VAT not paid





## Details

Year built: 2000  
Launching: 2000  
Condition: well-kept  
Length: 12,30 m  
Beam: 3,83 m m  
Draught: m  
Material Hull: GRP  
Material Assembly: GRP  
Engine type: Volvo Penta TAMD 63 P  
Number of engines: 2  
Fuel type: Diesel  
HP/kW: 2 / 2  
Operating hours: 830  
Fresh water tank: 300 l  
Holding tank: 124 l  
Fuel: 900 l  
Cabins: 2  
Bunks: 4  
Head room/wet lockers: 2

## Equipment

### Fixtures & Cabin Layout

Second helm station on fly bridge, Bow cabin, Fly bridge, Guest cabin, Equipment rack, Interior navigation station, Salon, Teak swimming platform, Teak steps to flybridge, Teak cockpit

### Pantry

Oven, Refrigerator, Electric hob, Sink unit

### Technology

12V socket, 220V socket, Anchor, Anchor locker, Battery, Battery charger, Bilge pump automatically, Electric bilge pump, Electric Bow windlass, Pressure water pump, Shore power 230V

### Navigation

Autopilot, Echo sounder, GPS, Plotter, Compass, Sumlog, VHF radio

### Safety

Fire extinguisher equipment, navigation lights, Signal horn, Electric searchlight

### Awnings & covers

Bimini top, Camper cover

## Accessories

Swimming ladder, Swimming platform, Bow thruster, CD player, Cockpit cushions, Deck hatch, Pressure washer, Fender, Mooring line, Speaker, Cushions, Radio, Trim tabs, Electric/hydraulic trim tabs, Anti-fouling, Water heater, other extras

## Description

## Contact



Vendor: commercial  
**bcm-yachtsales GmbH**

Herr Dirk Michels  
Phone: +49.(0)251 / 39 46 92 39  
Fax: +49.(0)251 / 39 46 92 35  
Mobile: +49.(0)151 / 14 23 53 23

<https://www.bcm-yachtsales.de>  
[info@bcm-yachtsales.de](mailto:info@bcm-yachtsales.de)