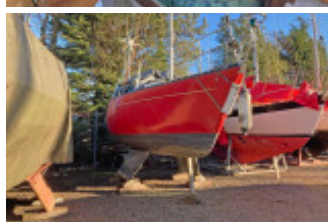
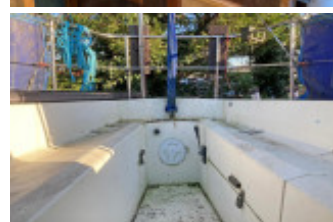
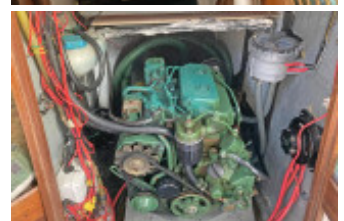
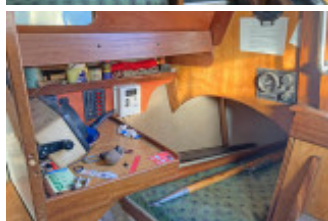
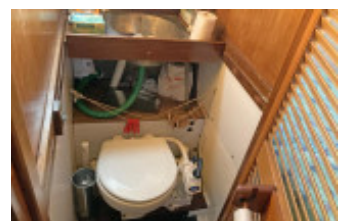
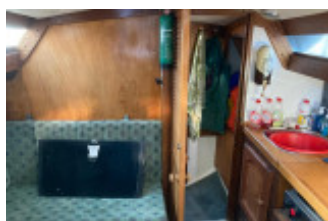


Cobra 750

Segelyacht, Gebrauchtyacht, GB Ipswich

€ 8.628,-

MwSt. bezahlt





Details

Baujahr: 1980
 Erstwasserung: 0
 Länge: 8,00 m
 Breite: 3,00 m m
 Tiefgang: 1 m
 Gewicht: 2631 kg
 Motortyp: Volvo Penta 2002
 Motoranzahl: 1
 Kraftstoffart: diesel
 PS/kW: 18 / 13
 Frischwasser: 100 l
 Kraftstoff: 50 l
 Kojen: 3
 WC/Nasszelle: 0
 Trailer: ohne Trailer

Ausstattungen

Beschreibung

This **Cobra 750** is a twin bilge keel family cruiser from the board of David Feltham. She has a well mannered performance and good accommodation, which makes her a perfect introduction into yacht ownership and a fantastic for exploring the East Coast. Viewing by appointment only through our Suffolk Office - 01473 659681

Accommodation

5 berths in 2 cabins with approx. 5'10" max. headroom. Forepeak with a double V-berth with an infill. Full width heads compartment with marine toilet, sliding basin, table storage area and wet locker. Saloon with dinette to port which can be converted into a double berth, linear galley opposite consisting of a Plastimo Neptune 2-burner gas cooker, sink with cold water supply. Chart table and quarter berth aft to starboard. Check upholstery with scatter cushions and curtains. Practical and well finished woodwork with lots of built in stowage.

Mechanical Systems

Located abaft companionway, Volvo Penta 2002. 2 cylinders, 18HP. Freshwater cooled via heat exchanger. Single lever controls with electric start. Sail drive leg to a fixed 2 bladed propeller. Sail drive diaphragm changed 2023. Engine serviced end of 2023. Approximately 50 litre fuel tank.

Electrical Systems

12 volt domestic battery 12 volt engine start battery Alternator charging Wind charger

Sails & Spars

Masthead rigged sloop. Anodised aluminium mast and boom. Spreaders. Stainless steel standing rigging (new 2018). Terylene running rigging (new 2018). Slab reefing mainsail with 3 reefs, lazyjacks and stackpack. Headsail furling system. Two sheet winches. Mainsail - Suffolk Sails- 2018 Genoa - Suffolk Sails - 2018

Deck Equipment

Danforth type anchor Stainless steel pulpit, pushpit and aluminium stanchions Stainless steel fixed bathing ladder Sail cover and hatch cover in blue Various fenders and warps Dodgers with name Stainless steel boarding ladder Sprayhood

Navigation Equipment

Steering compass Swiftech VHF Seafarer 5 depth sounder Navigation lights

Safety Equipment

Fire extinguisher Fire blanket Manual bilge pump

Construction

Built by Cobra Yachts in approximately 1980 to a David Feltham design. Red painted GRP hull with white GRP superstructure and decks with moulded non-slip surfaces. Twin bilge keels with encapsulated lead shot ballast. Stainless steel keel boots. Tiller steering to skeg hung rudder. Self draining cockpit. Aluminium toe rail.

Disclaimer

The company normally acts as broker for the vendor who unless otherwise stated is not selling in the course of a business. Whilst every care has been taken in the preparation of these particulars the correctness is not guaranteed and they are intended as a guide only and do not constitute a part of any contract. A prospective buyer is strongly advised to check these particulars and where appropriate and at his own expense to employ a qualified marine surveyor to carry out a survey and/or to have an engine trial conducted which if conducted by us shall not imply any liability on our part.

Kontakt



Verkäufer: gewerblich

Clarke & Carter Interyacht Ltd

Suffolk Office

Telefon: +44 (0)1473659681

Telefax: +44 (0)1473659758

<https://www.clarkeandcarter.co.uk/>

suffolk@clarkeandcarter.co.uk