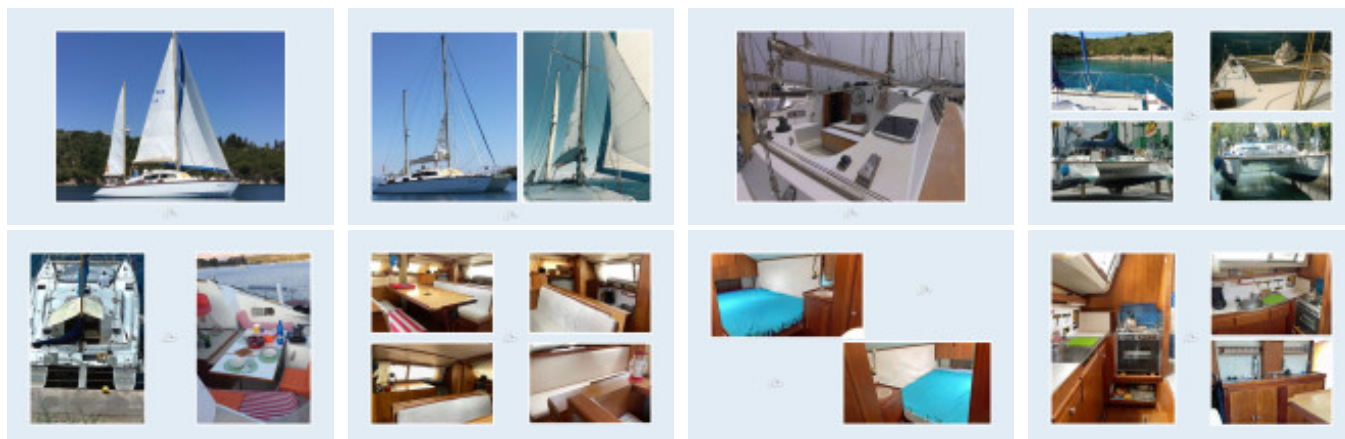


Apache 41

Sailcraft (GB), Multi-hull boats, Second-hand yacht, Griechenland Griechenland

€ 79.000,-

EU taxed - no, VAT not paid



Details

Year built: 1975

Launching: 1975

Condition: well-kept

Length: 13,50 m

Beam: 5,90 m m

Draught: 0,90 - 2,40 m

Free-board: 1,75

Weight: 6100 kg

Material Hull: GRP -Sandwich
Material Assembly: GRP -Sandwich
Rig: Ketch
Sail surface: 83,5 qm
Drive:
Engine type: Ford
Number of engines: 2
Fuel type: Diesel
HP/kW: 54 / 40
Steering: Single throw switch
Operating hours: 750
Fresh water tank: 400 l
Fuel: 2 x 180 l
Cabins: 4
Bunks: 6
Head room/wet lockers: 2
Ship's steering: Steering wheel

Equipment

Fixtures & Cabin Layout

Aft cabin, Bow cabin, Salon

Pantry

Oven, Freezer, Refrigerator, Gas hob, Sink unit

Technology

220V socket, Anchor, Battery, Battery charger, Electric bilge pump, Electric Bow windlass, Shore power 230V, Solar battery charger

Navigation

Autopilot, Echo sounder, GPS, Compass, Radar, Sumlog, VHF radio, Weather radio receiver, Wind instruments

Safety

Fire extinguisher, navigation lights, Fog horn, Life jacket, Guard rails, Signal horn, Searchlight

Sails

Mizzen, Genoa, Main sail battens, Lazy-Bag, Furling-jib system, Storm head sail, Winches

Awnings & covers

Cockpit awning, Awning over the quarterdeck, Spray hood, Winter cover

Accessories

Anchor chain, Swimming ladder, Cockpit cushions, Deck shower, Deck hatch, Fender, Mooring line, Gangway, Septic tank, Anti-fouling, Boiler, other extras

Description

The Apache 41 is a renowned cruising catamaran, celebrated for her stability and safety under sail. Built in 1975, this

spacious family cruiser features lifting keels and a versatile ketch rig. Only about 20 of these iconic Rod McAlpine Downie designs were built by Sailcraft Ltd. in the UK. The Apache 41 is privately owned, has never been chartered, and is in excellent technical and well-maintained condition, as the owner sails her only about three months a year and keeps her safely stored ashore for the rest of the year. In 2017, her underwater hull was professionally sandblasted (no osmosis), sealed with tar epoxy, and coated with antifouling to maintain her value. Annual servicing and fresh antifouling have been consistently performed. Modified for single-handed sailing, she allows all lines, reefing, anchoring, and sail operations to be managed from the cockpit. These upgrades reflect the owner's 30+ years of multihull expertise, ensuring maximum functionality and ease of operation. Her central engine was replaced with two Saildrive engines, located in each hull, offering excellent maneuverability. Her bridge deck clearance ranges from 90 cm to 60 cm. Currently stored ashore in Greece, this beautiful catamaran is available for viewings. If you're seeking a well-maintained cruiser for the next sailing season, don't miss this opportunity.

Contact



Vendor: commercial
cat sale

Herr Klaus Tietze
Phone: +49.(0)421620 83 32
Fax: +49.(0)421620 83 31
Mobile: +49.(0)176 / 630 646 22

<https://www.cat-sale.de>
info@cat-sale.de