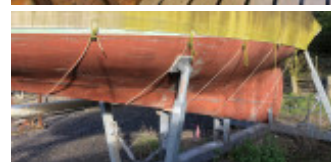
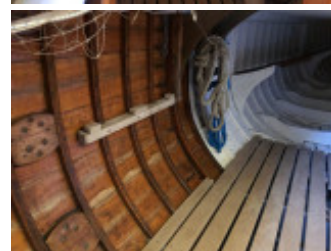
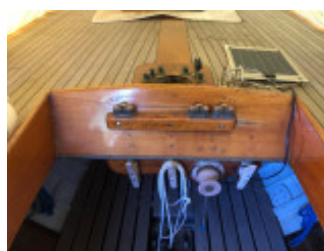
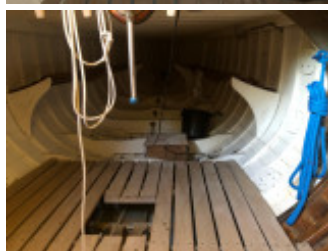
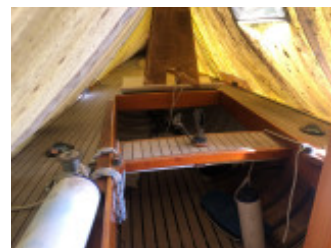
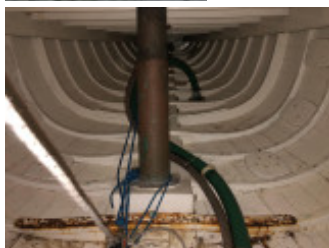


International 6m

Segelyacht, Gebrauchtyacht, GB Levington

€ 17.255,-





Details

Baujahr: 1932
Erstwasserung: 0
Länge: 10,00 m
Breite: 2,00 m m
Tiefgang: 1 m
Motoranzahl: 0
WC/Nasszelle: 0
Trailer: ohne Trailer

Ausstattungen

Beschreibung

International 6m classic day racer called Maida. Sail number GB1/K1. This yacht has a fantastic history and is an opportunity for her next owner to join the international classic boat racing scene. Maida has been laid up ashore for a few years and will now need some attention to her topsides before being fully commissioned. In his book *The Magnificent Sixes*, Tim Street said of Maida that she "...showed surprising turns of speed" Well worth inspection! Viewing by appointment at our Suffolk Office (IP10 0LN) - 01473 659681

Construction

Built to the International 6m rule in 1932. She has a pine carvel hull on mahogany frames with teak decks. Her topsides are two pack painted which will need attention. She has a long keel with lead ballast. Tiller steering to a keel hung rudder. Last surveyed in 2018. She has been in her current ownership for 10 years.

Spars & Sails

Bermudan fractional sloop rig. Varnished Spruce keel stepped mast and Spruce boom. Stainless steel standing rigging. Terylene running rigging. Slab reefing to mainsail. Four sheet winches. Two halyard winches. Hank on headsails. Alloy jib tracks. Mainsail - Dacron - Doyle Sails - Good condition Genoa - Dacron - Doyle Sails - Good condition Spinnaker - Doyle Sails - Good condition 2nd Spinnaker - Doyle Sails - Good condition Mainsail and Jib - Ratsey & Lapthorn Sails - Delivery sails

Navigation Equipment

Single 12V battery Tactic speed/log Tactic echo sounder Silva deck mounted compasses.

Deck Equipment

Folding anchor with 20m warp Fitted winter cover (needs a clean) Boom awning Mainsail cover Various fenders and warps Electric and manual bilge pumps Winter storage cradle, suitable for flat bed transport.

History

As far as classic boats go, you could hardly ask for a more popular design than the International Six Metre, a class of racing yachts from the Olympics of yesteryear. Maida is a 35-foot racing sloop, built in 1932 by Alexander Stephen and Sons, which was a Scottish shipbuilding company in Glasgow on the River Clyde. She was designed by "Wee John" Stephen of the same family. The International Six Metre class (often called 6mR) is a construction class, which means the boats are not identical but are designed to meet a measurement formula. Also, "six metre" refers to the formula rather than the length of the boat; six metre yachts are on average 30-35 feet long. The design has an almost straight line from the stem head to the rudder heel. Unlike the swooping overhang of the stern, the bow is nearly plumb. According to the original plans, Maida was built of African white mahogany planking on a yellow pine backbone. She has been through numerous refits, during which the ribs and some of the planking have been replaced and some deck modifications made. Maida has a recent mahogany cockpit coaming and slatted hardwood cockpit sole boards. Much has been changed on a wooden boat that is 80 years old, but despite her many upgrades, Maida's classic lines still continue to dazzle.

DISCLAIMER

The company normally acts as brokers for the vendor who unless otherwise stated is not selling in the course of a business. Whilst every care has been taken in the preparation of these particulars the correctness is not guaranteed and they are intended as a guide only and do not constitute a part of any contract. A prospective buyer is strongly advised to check these particulars and where appropriate and at his own expense to employ a qualified marine surveyor to carry out a survey and/or to have an engine trial conducted which if conducted by us shall not imply any liability on our part. General note on safety equipment: Any safety equipment such as liferaft, fire extinguishers and flares etc., are usually personal to the current owner(s) and if being left on board as part of the sale of a used vessel, may require routine servicing, replacement, or changing to meet a new owner's specific needs.

Kontakt



Verkäufer: gewerblich

Clarke & Carter Interyacht Ltd

Suffolk Office

Telefon: +44 (0)1473659681

Telefax: +44 (0)1473659758

<https://www.clarkeandcarter.co.uk/>

suffolk@clarkeandcarter.co.uk