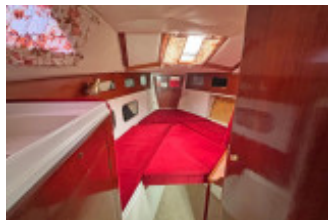


Trident Challenger 31

Segelyacht, Gebrauchtyacht, GB Felixstowe

€ 15.817,-

MwSt. bezahlt





Details

Baujahr: 1979
 Erstwasserung: 0
 Länge: 9,00 m
 Breite: 3,00 m m
 Tiefgang: 1 m
 Gewicht: 4300 kg
 Motortyp: Thornycroft 108/2
 Motoranzahl: 1
 Kraftstoffart: diesel
 PS/kW: 38 / 28
 Frischwasser: 340 l
 Kraftstoff: 112 l
 WC/Nasszelle: 0
 Trailer: ohne Trailer

Ausstattungen

Beschreibung

ghghg

Accommodations

Offering up to four berths in a traditional and spacious layout. Up forward there is V-berth with an infill, to make a spacious double. Large hanging locker to port. Separate heads compartment with a manual marine toilet, basin with a manual cold water supply. In the saloon there are two large settee berths to port and starboard with folding leaf table to centre. Aft facing chart table in the port quarter with instruments & control panel. Opposite in the starboard quarter is the galley with a Plastimo Neptune 2 burner gas hob with oven & grill. Twin stainless sinks with a manually pumped cold water supply. Top open Isotherm refrigerator with freezer box. Carpets and curtains throughout. Red cushions. Radio/CD. Eberspacher cabin heating.

Mechanical Systems

Located under the companionway stairs is the Thornycroft 1080/2 marine diesel engine, fitted new in 1987. 38hp, 4 cylinders, fresh water cooled via a heat exchanger. Shaft drive to a fixed three bladed propeller. Single lever controls. Electric start. Approximately 1100 engine hours. Engine has been regularly serviced by the owner.

Electrical

12 volt domestic battery 12 volt engine start battery Alternator charging Two solar panels

Spars & Sails

Masthead rigged Bermudan sloop. Deck stepped alloy mast and boom by Kemp. Stainless steel standing rigging. Terylene running rigging. Slab reefed mainsail with lazyjacks. Headsail furling system. Lines led aft. 8 Lewmar winches. Mainsail Genoa Jib Cruising chute

Deck Equipment

Stainless steel push and pull pits Stainless steel mooring cleats Various fenders and warps Stainless dinghy davits Manual anchor winch CQR Plough anchor with chain Green cockpit sprayhood with small closure on aft end - new 2022 Stainless steel boarding ladder

Navigation Equipment

Plastimo steering compass Navman Tracker 5607 chart plotter Navman wind instrument Clipper depth instrument Raymarine autopilot Garmin 128 GPS ICOM IC-M411 DSC VHF

Safety Equipment

Horseshoe lifebuoy Manual bilge pump Electric bilge pump Radar reflector Day shapes

Construction

Built by Trident Marina Sales Ltd in 1979 and first launched in 1980 after completion by its first owner. Angus Primrose design. White GRP hull with green boot top. White GRP deck and superstructure with moulded non-slip surfaces. Traditional long keel with an encapsulated ballast. Keel hung rudder.

Disclaimer

The company normally acts as brokers for the vendor who unless otherwise stated is not selling in the course of a business. Whilst every care has been taken in the preparation of these particulars the correctness is not guaranteed and they are intended as a guide only and do not constitute a part of any contract. A prospective buyer is strongly advised to check these particulars and where appropriate and at his own expense to employ a qualified marine surveyor to carry out a survey and/or to have an engine trial conducted which if conducted by us shall not imply any liability on our part. General note on safety equipment: Any safety equipment such as liferaft, fire extinguishers and flares etc., are usually personal to the current owner(s) and if being left on board as part of the sale of a used vessel, may require routine servicing, replacement, or changing to meet a new owner's specific needs.

Kontakt



Verkäufer: gewerblich

Clarke & Carter Interyacht Ltd

Suffolk Office

Telefon: +44 (0)1473659681

Telefax: +44 (0)1473659758

<https://www.clarkeandcarter.co.uk/>

suffolk@clarkeandcarter.co.uk