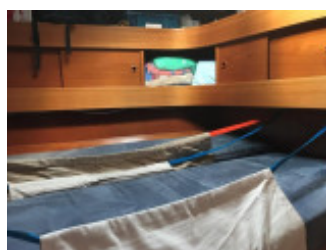
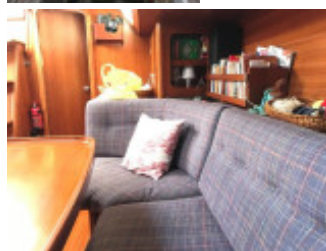


Grand Grand Soleil 46

Segelyacht, Gebrauchyacht, TR Gocek

€ 55.000,-

MwSt. inklusiv



Details

Baujahr: 1987

Erstwasserung: 0

Länge: 13,99 m

Breite: 4,25 m m
Tiefgang: 2.3000 m
Gewicht: 12000.000 kg
Motortyp: 1 x Volvo 1987 63 HP
Kraftstoffart: diesel
Betriebsstunden: 8000
Kraftstoff: 250 l
WC/Nasszelle: 0

Ausstattungen

Beschreibung

Owners comments

Owned 25 years. Used E. Mediterranean for two six week periods each year by family. Stored ashore. Cruised to Tunisia, Italy, Greece, Malta, Syria, Lebanon, Israel and Egypt. Never chartered.

Broker comments

Never chartered, used for family cruising only. Professionally maintained. Keen owner who will consider serious offers.

DESCRIPTION

Grand Soleil 46 built by Cantiere del Pardo, Italy in 1987
British flag

CONSTRUCTION:

White hull
GRP hull
12 mm teak deck
Fin keel
Wheel steering

MECHANICALS and RIG

One Volvo, 4 cyl, fresh and sea-water cooling diesel engine, 63 HP
Regularly serviced
8000+ hours run at April 2024
7.5 knots cruising speed
8 knots maximum speed
Shaft drive to adjustable 3 feather blade propeller (propeller shaft and seal replaced 2023)

ELECTRICS:

12 V
1 x 95 A/H engine battery
6 x 110 A/H service battery
Switched batteries
90 A/H engine alternator
Victron 50 A.H battery charger
Megatronic 40 A/H charger
Shore power and cable

TANKAGE:

1 x 250 L S/S fuel tank
2 x 300 L S/S water tank
1 x 100 L heavy duty flexible holding tank

WATER SYSTEM:

Pressurised and manual water
Seawater system
Hot water from immersion and engine

RIG

Sloop
Selden aluminium spars
S/S standing rigging (replaced in 2007)
Slab reefing mainsail
Furling genoa
Spinnaker pole
Selden kicker

SAILS:

Fully battened mainsail by Sanders Sails 2014
Triradial cut, UV protected genoa by Sanders Sails, 2014
Assymetric spinnaker with snuffer. 2000
Storm Jib

WINCHES:

2 x Lewmar 65 ST dual speed self-tailing genoa winch
2 x Lewmar dual speed self-tailing spinnaker winch
1 x Lewmar mainsheet winch
4 x Lewmar 40 ST dual speed self-tailing halyard winch
1 x Lewmar 46 CVEST dual speed self-tailing electric winch

ACCOMMODATION and INVENTORY

ACCOMMODATION

Six berths (2 dbles/2 sgles) in three cabins, incl. two aft
Two heads with Jabsco WC, hand basin and shower
Techimpec gas cooker with three burners
Oven
155 L Fridge
31 L freezer
Sink in galley
Blue (Liberty) upholstery
Teak interior
6 foot headroom

INVENTORY

NAVIGATION AIDS:

Riviera compass
B&G Hydra speed, echosounder and log instruments
B&G Hydra wind instrument
Raytheon radar
VHF + ICOM portable
Furuno GPS
B&G Hydra autopilot

GROUND TACKLE:

25 Kg Rocna anchor
20 Kg Danforth anchor
20 Kg Bruce anchor
65 m 10 mm chain
60 m warp
Quick electric windlass

GENERAL EQUIPMENT:

Searchlight
Deck shower
Bilge pumps
3 x MOB safety sling
Navigation lights
Guardwire (replaced 2023), pulpit and pushpit
Sprayhood
Bimini
Cockpit cover
Besenzoni boarding ladder
Folding passarelle (permanent on platform)
AB dinghy, 2016
Torqeedo electric OB, 2016 (with carry bag)
Various warps
7 Fenders
Boathook
Extensive tool kit and spare parts
Cutlery, crockery, utensils
Plastimo 8 man
Inflated RIB on deck
Scuba gear (no compressor)
Folding trolley
Portable Dyson vacuum
E-winch

Kontakt



Verkäufer: gewerblich
Sunbird International Yacht Sales

Andrea Martin
Telefon: +44 (0)1294 607074

<http://www.sunbirdyachts.eu>
brokerage@sunbirdyachts.eu