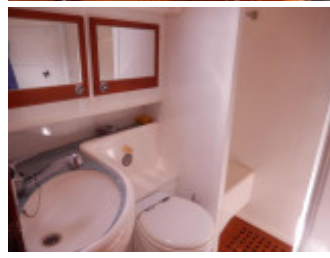


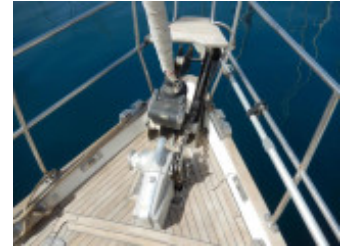
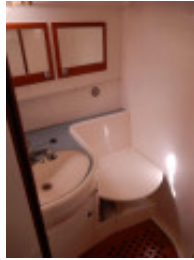
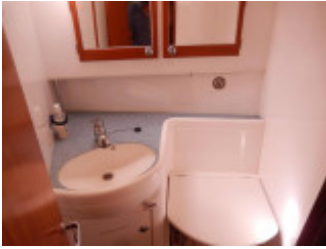
SUNBEAM 42 DS

Segelyacht, Gebrauchtyacht, TR MARMARIS

€ 230.000,-

MwSt. exklusiv





Details

Baujahr: 2009
Erstwasserung: 0
Länge: 12,60 m
Breite: 4,40 m m
Tiefgang: 1.9500 m
Gewicht: 12600.000 kg
Motortyp: YANMAR 4JH4-TE 75HP
Kraftstoffart: diesel
Kraftstoff: 300 l
WC/Nasszelle: 0

Ausstattungen

Beschreibung

Sunbeam 42 DS designed by J&J design and built by Schoechl Yachtbau in Austria in 2009
Mid-Cockpit Deck-Salon layout
German Flag

CONSTRUCTION:

GRP hull and superstructure
Teak side decks and cockpit
Fin keel
Skeg hung spade rudder
Wheel steering with folding wheel

MECHANICALS

1 x Yanmar 75 hp fresh water cooled four-cylinder diesel engine
Shaft drive to 3 blade Gori folding propeller
5Kw Bowthruster

ELECTRICS:

12V / 220V
1 x 360Ah Mastervolt Lithium service Batteries
1 x 60Ah Engine start battery
1 x 100Ah Bowthruster battery
Mastervolt Mass Combi 100A Battery charger
Engine alternator 100A
Mastervolt Whisper 6.4Kva Generator
1 x 80Ah Generator start battery
LED lighting throughout
Shore power with cable

TANKAGE:

1 x 300L fuel tank
2 x water tanks total 500L
2 x 80L holding tanks - 2022

WATER SYSTEM:

Pressurised water
Isotherm Calorifier

RIG

Sloop rig
Selden aluminium spars
Furlex 300E electric genoa furling with remote control
Selden In-Mast furling Main

SAILS:

Main - Doyle Raudaschl
Genoa - Doyle Raudaschl

WINCHES:

2 x Harken 53 2ST Genoa winches - electric
1 x Harken 40 2ST halyard winch on coachroof - electric
2 x Harken 40 2ST mainsheet winches
1 x Harken 40 2ST halyard winch on mast

ACCOMMODATION & INVENTORY

5 berths in 2 double cabins and slip berth under salon
Two heads, handbasins and showers - Electric WC and separate shower stall in owners ensuite
BOSCH Electric Induction hob with 2 plates
LG oven/microwave combi
12V Fridge
Double galley sink
Webasto reverse cycle 3 airconditioning in Salon and owners cabin
Mahogany interior wood

NAVIGATION AIDS:

Plastimo Steering Compass
Raymarine ST60 Speed, Log and depth
Raymarine fishfinder
Raymarine ST60 wind instrument
Raymarine C120W Plotter with AIS transceiver
Raymarine RD424HD Radar
Raymarine 6002 Autopilot with remote handset
Ray 240E VHF with handsets at nav station and helm
2 x ICOM handheld VHF's
McMurdo Smartfin EPIRB

GROUND TACKLE:

25kg Bugel anchor with 100m SS chain
16kg Delta anchor with 10m chain and 50m line
Lofrans 1500w electric windlass with remote and counter in cockpit or control at bow

GENERAL EQUIPMENT:

Besenzoni Skipper Passarelle
Swim platform with ladder
Side mount swim ladder
H/C Deckshower
Seawater Washdown pump
Safety Equipment

SOS Technik Liferaft – 6 pax
Manual + Automatic Bilge pumps
3 x Fire extinguishers
8 x Fenders
Various warps
Boathook
Sprayhood on hard screen -2023
Bimini - 2022
Foredeck sun cushions
Cockpit cushions
Caribe MVP9 RIB Dinghy
Yamaha 9.9hp outboard
Prasolux 300kg Electric davits for dinghy
JVC Radio/CD with salon and cockpit speakers
Clock
Cutlery,crockery, utensils

Kontakt



Verkäufer: gewerblich

Sunbird International Yacht Sales - Sunbird Marmaris

Peter Casalis De Pury

Telefon: +90 252 412 8325

<https://www.sunbirdyachts.eu>

sunbirdmarmaris@superonline.com