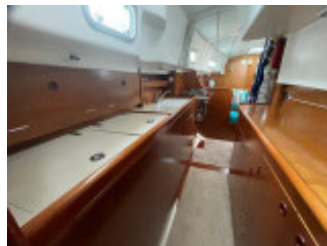
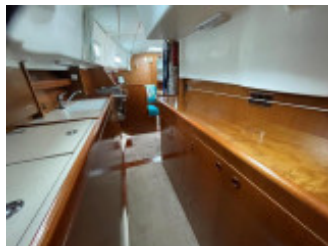
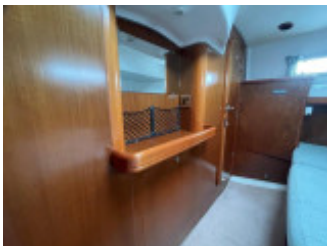


# Beneteau Oceanis 36CC

Beneteau (FR), Segelyacht, Neuyacht, GB Ardrossan

€ 63.264,-

MwSt. inklusiv



Details

Baujahr: 1998  
Erstwasserung: 0  
Länge: 11,10 m  
Breite: 0,00 m m  
Tiefgang: 1.5300 m  
Gewicht: 6000.000 kg  
Motortyp: Volvo 2040 38Hp  
Kraftstoffart: diesel  
Kraftstoff: 120 l  
WC/Nasszelle: 0

## Ausstattungen

## Beschreibung

In Excellent condition this Beneteau Oceanis 36CC is a good example of the modern center cockpit cruiser. Her accommodations are exceptional and her sailing performance is excellent for a boat of this type. Three owner from new with lots of spec including heating, radar and full electronics pack from B+G. Current owners have added a Bow Thruster and full cockpit canopy, newly fitted electric anchor windlass, brand new dinghy, cockpit table and she ready to sail away.

### Construction and Mechanical

#### Construction:

GRP Hull and superstructure.

Cast iron keel.

Prop shaft protected by skeg.

Cherry stained interior woodwork.

#### Exterior deck fittings:

Fixed GRP windscreen fitted with Exalto wiper system.

Winter tonneau cover. Sprayhood, cockpit enclosure and tonneau cover by Saturn Sails in 2018.

Green livery.

Self bailing anchor locker.

Deck mounted electric anchor windlass (new Lofrans Cayman windlass and Quick deck switches fitted in 2024 by 360 Boat Services).

6 x 300mm mooring cleats.

Folding bathing ladder from transom.

Lockers on both port side and starboard side.

Lockers in cockpit.

Teak grating in cockpit under helm position.

Folding teak cockpit table.

Teak console with bow thruster and wiper controls, USB power outlets.

RoKK iPad mount and storage net.

4 x cup holders fitted to binnacle rail.

Stainless steel pulpit fitted with navigation lights.

Stainless steel pushpits with horseshoe bracket, flagpole socket and outboard bracket.

Stainless steel stanchions 4 x stainless steel fender baskets mounted on pushpit rail.

Bow to stern safety-lines on both port and starboard sides.

PVC coated stainless steel guardwires (opening gates port and starboard sides).

Teak capped bulwark.

Liferaft attachment eyes on aft deck.

Teak grabrails on Coachroof.

#### Steering system:

Spade rudder with composite stock, add, Serviced and rudder bearing and seals replaced by 360 Boat Services in 2020.

Stainless steel wheel 800mm diameter.

Hydraulic steering.  
Emergency tiller.  
Vetus Bow Thruster fitted by 360 Boat Services 2021.

**Mechanicals:**

Volvo 2040 38hp Diesel  
Fuel capacity 120 litres approx  
Foam sound proofing in engine compartment EC approved  
Decanter filter on fuel system  
Fixed 3 blade prop

**Electrics:**

12 Volt system via 2 x 95 Ah domestic batteries (new 2022).  
1 x Engine start battery (new 2017).  
1 x 100 Ah bow thruster and anchor windlass battery (new 2024).  
Shore power with water heater and battery charger.

**Water system:**

420 litres water capacity divided between 2 tanks.  
Pressurized hot and cold water.  
22 litres calorifier and immersion heater.  
Shower on bathing platform.  
1 manual and 1 electric bilge pump.

**Mast Rigging and Sails, Accommodation**

Anodized aluminium mast stepped on deck.  
Two sets of spreaders.  
In Mast Furling.  
Anodized aluminium boom.  
1/19 Stainless steel rigging replaced 2015.  
Upper shrouds, lower shrouds, babystay and double backstay.  
Stainless steel support inside.  
2x Lewmar 44Genoa.  
1x Lewmar.

**Sails:**

Furling in mast Main From Kemp 2006.  
Furling Genoa From Kemp 2006.  
Both sails cleaned, serviced and fitted with new sun-strips by Saturn Sails in 2017.

**Accommodation:**

Sleeps six in two cabins.  
Forward cabin with one double berth. Fitted with slatted bed-base and Dry-mat anti condensation underlay.  
Aft cabin original double bed and settee configuration modified to give large double bed with slatted bed base and Dry-mat anti condensation underlay and additional under bed storage: can be simply reconfigured to original layout if desired.  
Dressing table with mirror.  
2 x storage nets and 240 V socket. and bedside USB sockets.  
Two sets of purpose made fitted sheets for each of forward and aft cabins and mattress protectors.  
New carpets fitted in forward and aft cabins 2019.  
Carbon Monoxide and Smoke detectors fitted in forward and aft bedrooms and main saloon.

**Galley:**

Eno 2 burner and oven gas cooker.  
Icebox with basket compartments.  
12v electric fridge.  
Laminated worktop.  
Chartable with stowage space and sliding navigator's seat and 12 V chart table lamp.

#### Head compartment:

Shower, Wash basin with hot/cold mixer tap.  
Electric pump for draining.  
Saloon table with central drinks bin.  
Cupboards with ventilated doors.  
Lighting converted to low wattage LED throughout.  
4 x storage nets fitted beside companionway steps.  
Cabin heating with outlets in the saloon, heads and owner cabin.

#### Inventory

##### Navigation:

Plastimo compass  
B&G Network Wind (Speed and Direction)  
B&G Network Quad (Log and depth)  
B&G Network Pilot  
Navman Chartplotter new 2011  
Midland VHF New 2011  
JRC Radar New 2006

##### Safety:

Three Crewsaver 150 N automatic life jackets (certified until April 25)  
Ocean Safety four person life-raft (certified until March 27)  
3 x LifeLink systems safety harnesses  
SOS Danbuoy self inflating danbuoy (certified until March 25)  
Crew-Talk marine intercom set  
Horseshoe flotation device and floating throwing line  
Engine compartment automatic fire extinguisher  
3x fire extinguishers  
Fire blanket,  
Emergency bolt cutters  
Boat Safety Scheme Certificate valid until 1/6/2026

##### Mooring and Anchoring:

4 Warps and 6 fenders.  
35m Anchor Chain 25 warp & Brittany anchor  
Bucket launch kedge anchor with chain and rhode  
56 lb weight, shackle and Alderney ring as anchor angel system warp and chain combination for mooring.

##### General:

CD player with Cockpit speakers  
Windward SL-Air, 2.3 m inflatable dinghy (new 2024)  
Suzuki 2.5 hp short-shaft, four stroke outboard, DF 2.5 S (new 2023)  
2x4.5 kg flo-gas butane cylinders  
20 litre, stainless steel, spare diesel jerrycan  
5 L Volvo Penta engine oil  
Dehumidifier unit, bar heaters and thermostatic switch for over-wintering

##### Charts, Guides and Manuals:

Admiralty Leisure Firth of Clyde, Mull of Kintyre to Ardnamurchan Point, and Northern Ireland - Carlingford Lough to Lough Foyne charts  
Admiralty Tidal Streams Atlas  
Imray Firth of Clyde Charts  
Clyde Cruising Club Guides, Kintyre to Ardnamurchan and Ardnamurchan to Cape Wrath.  
Beneteau manuals and instruction manuals for boat systems and accessories

## Kontakt



Verkäufer: gewerblich  
**Sunbird International Yacht Sales**

Andrea Martin  
Telefon: +44 (0)1294 607074

<https://www.sunbirdyachts.eu>  
[brokerage@sunbirdyachts.eu](mailto:brokerage@sunbirdyachts.eu)

---

© BoatNet 1996-2026 <https://www.boatnet.de/>