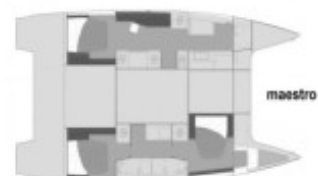
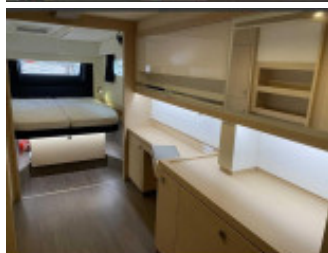
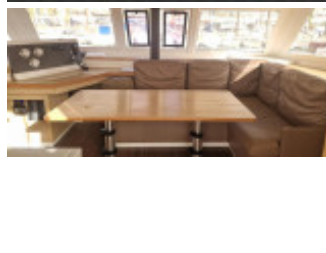


Fountain Pajot Saona 47

Fountain Pajot (FR), Segelyacht, Gebrauchtyacht, GR

€ 795.000,-

MwSt. exklusiv





Details

Baujahr: 2019
Erstwasserung: 0
Länge: 14,02 m
Breite: 7,71 m m
Tiefgang: 1.2800 m
Gewicht: 13800.000 kg
Motortyp: Twin Volvo Penta D2-60 60hp diesel engines, sail d
Kraftstoffart: diesel
Betriebsstunden: 782
Kraftstoff: 940 l
WC/Nasszelle: 0

Ausstattungen

Beschreibung

Boomerang is a lovely example of the Fountaine Pajot Saona 47. Mainly sailed in the Mediterranean, and very well maintained. Set up for off the grid liveaboard. All electrical systems and appliances are connected through the inverter to allow everything on board to be run off the batteries and solar panels. This includes heating hot water, running the watermaker, washing machine, dishwasher, and galley appliances.

Construction and Mechanical CONSTRUCTION

Construction is typical of this builder, with a vinylester resin-infused, balsa-cored hull and deck.

The interior is functional, urban contemporary in design and very attractive. The systems are neatly installed, and there's good access to the bilges.

Additional stainless steel handrails around coachroof and on stairs throughout the boat.

Additional cleats on transom steps from foredeck to coachroof.

Bow princess seats.

MECHANICAL

Twin Volvo Penta D2-60 60hp diesel engines, sail drive.

Port engine hours of 782 and starboard of 716 hours at 10/24.

3-blade folding propellers with rope cutters.

2 x Racor dual fuel filter/water separator with clear bowl.

SPARES:

Volvo MDI module.

1 x set of engine hoses and Racor fuel filters.

Various Volvo engine servicing spares.

Watermaker filters.

Set of sail drive and propeller anodes.

Set of steering cables.

Autopilot service kit.
2 x bilge pumps
Jabsco service kit.
3 x joker valves.
Lewmar winch service kit.
Mercury outboard seal kit.

Electrics:

12/220v electrical systems
5 x Victron Energy Lifepo4 330a batteries
Lynx Smart BMS
Air conditioners can be powered from Victron
Coolmar soft start 18,000 BTU air conditioner in saloon, July 2022
Coolmar soft start 12,200 BTU air conditioner in owner's cabin, July 2022
Westabro soft start air conditioners in both guest cabins, 10,000 BTU, June 2024
Pre-installed hull/seacock fittings for a generator. NO GENERATOR installed
7 x additional electric sockets in saloon and additional 12v USB outlets in saloon
2 x weather protected electrical sockets in cockpit
5 x 390w SunPower solar panels on a stainless steel frame off the back of the coachroof, and connected to 5 x 100/30
Victron mppt controller, the Smart batteries and a 3000w Victron inverter charger.

Water systems:

Hot and cold pressurised water systems
Water heated in tank with 220v immersion heater or heat exchanger Aquabase 12v 60 lph watermark with auto rinse
Deck freshwater washdown outlet in anchor locker and starboard transom, seawater washdown outlet in anchor locker
Transom hot and cold shower
1 x Comfort Plus freshwater electric head in guest aft cabin, 1 x Comfort freshwater electric head in owner's cabin
1 x Jabsco seawater manual head in forward guest cabin

Tankage:

Fuel capacity of 940 litres in 2 tanks
Water capacity of 700 litres in 2 tanks
3 x 45 litres holding tanks

Mast Rigging and Sails, Accommodation

MAST RIGGING AND SAILS

Sloop rig.
Bowsprit and gear for gennaker.
Outhaul/preventor rigged to feed back to stern winches.
Spinnaker halyard and topping lift fed back to the helm.
Sail bag and lazy jacks.

Winches:

2 x Lewmar electric winches at the helm
1 x Lewmar manual winch at the helm
1 x Lewmar manual winch on port stern for dinghy and gennaker operation
1 x Lewmar manual winch on starboard rear for gennaker operation

Sail Wardrobe

Main Square top fully battened, Incidence Sails, with 3 reefs, single line for reef 1 and 2, Karver auto hook
Furling genoa Incidence Sails
Gennaker 110 sq metres, Incidence sails, on an endless furler with sheets fed back through blocks to stern winches

ACCOMMODATIONS

The interior feature of the Saona 47 is a master suite. This "owner's version" dedicates the entire port hull to a big

double bed aft, a vanity, extensive stowage space amidships and a forward compartment with a surprisingly long shower, big sink and an enclosed toilet.

The starboard hull houses two nice-sized sleeping cabins, each with large double berths and en-suite head.

The saloon is expansive, modern and bright, with large windows that provide good visibility,

The overhead clearance will delight sailors over 6ft.

Domestic:

130 litre 2 drawer fridge in saloon 90 litre freezer in saloon

Fridge in cockpit

Portable icemaker

Electrolux 6 person dishwasher

Webber Q1100 gas BBQ on transom, connected to gas system

Washing machine

Curtains in cabins

Pull down blinds on saloon windows

5 x Sirocco II saloon and cabin fans

Bed linen, towels, crockery, cutlery, cooking pans and utensils

Electric appliance – kettle, toaster, sandwich-maker, pie maker, hand blender, blender, air fryer, Nespresso coffee maker

Microwave oven

Water boiler

Inventory

Navigation:

Garmin GPSMAP 8410 at helm

Garmin GPSMAP 7410 in saloon

AIS

Garmin radar

Transducer for water depth and temperature

Garmin autopilot with remote control

Fountaine Pajot/Garmin Smart Cruising

2 x Garmin VHF handsets

Icom handheld VHF radio

Normal FP supplied running lights on hull, plus tri-colour on mast head

Motion sensor security light in cockpit

Safety:

1 x Spinlock deck vest

3 x Lalizas inflating vests

4 x foam lifevests

Ocean Signal EPIRB

Carbon monoxide detectors in each hull Smoke detector in saloon

LPG detector in owner's cabin 5 x fire extinguishers

2 x fire blankets 8 person liferaft, 2024

Mooring and Anchoring

Quick electric windlass with remote control at anchor locker and control with chain counter at helm

Mantus 38kg anchor with 100m of 12mm chain

Back up Mantus 38kg anchor

Bridle with rubber snubbers

12 x fenders 4 x dock lines with rubber snubbers

2 x 50m 3-strand shorelines, and various other warps

General

Highfield Hyperlon CL340 dinghy with caps, oars, seat and saddle bag, fuel tank, pump, anchor and rode Mercury

9.9hp 4-stroke outboard engine

5 x 20 litre yellow diesel jerry cans

1 x 20 litre clear water can

1 x 10 litre red petrol jerry can

Pair of Sena 2-way headsets
Nikon binoculars
Cockpit weather protection tent (clear) plus full Textalene style shade protection
Helm weather protection tent (clear) plus full Textalene style shade protection
Flydeck outdoor seating cushions and sunbed pads
Cockpit and helm cushions
Foredeck and flydeck Sunbrella style tent

Kontakt



Verkäufer: gewerblich
Sunbird International Yacht Sales - Sunbird Mallorca

Denise Parkin
Telefon: +34 971 676392

<https://www.sunbirdyachts.eu>
denise.parkin@sunbirdyachts.eu