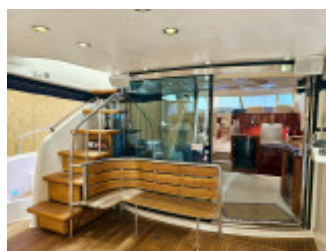
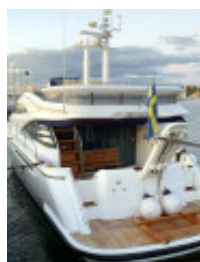


Fairline Squadron 58 Fly (Neuzugang)

Fairline (GB), Motoryacht, Gebrauchyacht, Schweden Nähe Göteborg

€ 423.900,-

EU versteuert, MwSt. bezahlt, MwSt. inklusiv





Details

Baujahr: 2007
 Erstwasserung: 2007
 Zustand: sehr gut
 Länge: 17,93 m
 Breite: 4,85 m m
 Tiefgang: m
 Material Rumpf: GFK
 Material Aufbau: GFK
 Antrieb:
 Motortyp: Volvo Penta D12-800 EVC
 Motoranzahl: 2
 Kraftstoffart: Diesel
 PS/kW: 2 / 1
 Steuerung: Elektrisch-hydraulisch
 Betriebsstunden: 840
 Kabinen: 3
 Kojen: 6
 WC/Nasszelle: 3
 Vorbesitzer: 1. Hand

Ausstattungen

Zubehör

Fairline Squadron 58 2007 Volvo Penta D12-800 EVC - Sold new in Sweden - 1 owner!

Description:

Are you looking for a flybridge in size 55 - 60 feet in the absolute premium class and have a budget of around 400.000 EUR? Don't miss out on this powerful, very well maintained Swedish sold Fairline Squadron 58 2007 with only 1 owner since new! The engines and engine room are impressively clean, the boat's finish is impressively high and its exclusive interior is in very good condition!

This beautiful 18 meter yacht from Fairline offers, among other things, a large deep swimplatform with powerful hydraulic gangway, a maximized aft deck with a large 4-seater sofa (under the sofa there is a hatch for descent to the boat's crew cabin with 2 berths and own toilet with sink with hot- and cold water), a big fantastic flybridge with room for a big grill- or cocktail party that offers a large front sundeck for up to 6 people, wet-bar with grill, fridge, sink and wastebin and a maximized round sofa group with electrically adjustable dining table for 10 people in the aft flybridge, an inviting salon with large U-shaped sofa group for 7 people, large storage and storage furniture with cupboards and built-in pop-up TV, electrically opening side windows, bar cabinet and a large, well-planned kitchen from where you have contact with your guests sitting in the salon as well as up in the dinette where 6 people sit comfortably at the table. From the big kitchen, steps lead down to the boat's pantry/laundry room that is remaid as a extra guest- or crew-cabin!

Between the salon's U-shaped sofa group and the front dinette there is a staircase with a large top hatch up to the helm station on the flybridge. From the perfectly planned helm station with double electrically adjustable captain's armchairs in the wheelhouse, there is a captain's door out to the starboard side of the side deck so that you as the captain can quickly and easily get out and moor the boat when docking.

Via the centrally located stairs down to the yacht's lower deck, you reach the yacht's 3 double cabins and its 2 large bathrooms with separate shower cabins with bench seats. The guest cabin with twin single beds and large wardrobe is located starboard amidships. To port amidships is the yacht's inviting VIP cabin with large double bed, desk with mirror, make-up box and stool and large double wardrobe. The VIP cabin also has its own entrance to the boat's Master bathroom. Between the guest cabin and forward Master cabin is the second bathroom and forward in the bow is the yacht's large airy Master cabin with a large double bed, double opening top hatches, large wardrobes and TV.

When you experience the yacht's snug and extremely well-planned exclusive interior, it is really hard to believe that the yacht is from the year 2007. Sofas and captain's chairs, wall and ceiling coverings and all the noble wood furnishings in darker mahogany really gives a lovely atmosphere on board!

On the aft deck there is access to the yacht's lazarette storage/technique room and engine room which confirms that this luxury yacht is indeed well maintained. The engines are impressively clean and nice and in very good condition mechanically. The entire engine compartment is clean and dry and the minimal corrosion that may be present confirms that the engine compartment has never been affected by moisture or water leakage.

In terms of equipment this Fairline Squadron 58 have the big aircondition system with cold/heat in saloon, kitchen and in all cabins with the aft crew-cabin included, the big generator on 17,5kW, a big hydraulic gangway with high lifting force in the aft, Fairline original davitz for storage of a big rib or jetski on the swimplatform, Raymarine navigation with GPS-plotters with echosounder, radar with open wing (intetrated in plotter), autopilot, the extra helm-station on aft deck/cockpit for docking e.t.c.

This impressive Fairline Squadron 58 which is available for viewing in Gothenburg/Sweden is sold with a guarantee that the yacht, its powertrains and all its significant systems are functional at the time of the yacht's sale and delivery.

Maintenance:

The boat is continously serviced and maintained by Volvo Penta mechanic according to Volvo Penta recommendations. Last engine servie in 2024. Last polish of the whole boat 2024. Last antifouling with new external zincs included in 2024. History of service/maintenance of the boat exists. The boat is always stored indoors in tempered storage hall over the winter months.

Specification:

Year: 2007

Country of origin: England

Sold new: Sweden

Number of owners: 1

Launched/year: 4-5 months (rest of the years stored Indoors in tempered storage hall)

VAT paid receipt: Yes

Length: 17.93 meters

Width: 4.85 meters

Depth: 1.39 meters

Weight: 23 tons (dry weight)

Fuel: 2x1363 liters

Freshwater tank: 1008 liters

Blackwater tank: 170 liters
Cabins: 3+1
Sleeps: 6+2
Seats: 4+13+15
Toilet/Shower: 3/3
Engine: 2x Volvo Penta D12-800 EVC
Hp: 2x800
Running hours: Approx. 840
Drive: Shafts
Cooling: Fresh water
Cruising speed: 16-24 knots
Maximum speed: 30 knots
Fuel consumption: Approx 110l/h in low March

Equipment:

Full documentation with VAT paid receipt included
User manuals
Antifouling
Teak deck on swimplatform, in cockpit and on steps (good condition)
Opened railings in the bow
Sun deck with sun pads and cup holders on foredeck
Complete aft enclosure canopy
Cover canopy on flybridge
Air conditioning reversible cooling/heating in all cabins (incl. crew-cabin) and in saloon
Generator Onan 17.5kW
Bowthruster Side-Power (powerful model)
Extra helm-station on aft deck/cockpit for docking
Hydraulic steering
Hydraulic trimtabs
Hydraulic gangway Besenzoni in the stern (lifts 350kgs) - control panel in the stern and on the way up to the flybridge
Electric mooring winches with foot controls in the stern
Electric windlass with anchor and galvanized chain in the bow - foot controls in the bow and control on both helm stations
Electric searchlight on the targa arch with control panel on both helm stations
Electronic controls Volvo Penta EVC
Digital engine data Volvo Penta EVC
Defroster in wheelhouse
GPS plotter/multiscreen Raymarine E120 with echosounder & radar on both helm stations
Radar Raymarine (open wing)
Autopilot Raymarine (on both helm stations)
Tridata (compass heading, depth and speed) Raymarine on both helm stations
VHF radio Raymarine on both helm stations
Rudder angle indicator on both helm stations
Compass (on both helm stations)
Windscreen wiper with flush function
220v shorepower with circuit breaker
24v/12v ship power
Shorepower cable
Complete batterybank
Battery charger
Deck lighting LED color blue on the swimplatform, side decks, in the cockpit, on the flybridge and at the steps
Large spacious aft deck/cockpit with 4-seater sofa, extra custom made aft facing 4-seater sofa, cockpit table, folding chairs, lazarette storage/technology room, storage locker (for ropes and fenders) and cooler Dometic
Access to aft crew-cabin with single beds (2x) with extra bed mattress and toilet room with toilet (manual) and sink with hot- & cold water through hatch under the aft sofa in cockpit
Deep integrated swimplatform with davits for tender, double storage spaces, swimladder (removable) and shower with hot- and cold water
Wet-bar with sink with hot- & cold water, dustbin, electric grill De Dietrich, fridge Waeco & ice-maker Isotherm in stainless on flybridge
Large U-sofa with table for 10 people in rear flybridge

3x captain's chairs with fold-down front seats on flybridge helm station
Large sun deck with sun pads for 6 people in forward flybridge
Large complete kitchen with Corian worktop, double sinks, refrigerator, electric oven/microwave with grill Sharp, induction hob 4 plates Siemens, cooker hood, dishwasher Zanussi and a lot of storage
Tableware Fairline
Laundry room/pantry (downstairs from kitchen) rebuilt to extra crew-cabin
Water heater
Level gauge for freshwater tank
Bar cabinet in saloon (before descent to kitchen)
Large storage unit with cabinet for crockery, glasses etc. in saloon (on starboard long side)
Sound system Bose 321 in saloon
Electrically opening side windows in rear saloon
Blackout curtains in saloon
Large U-shaped sofa group with stool and exclusive teak table for 8 people in saloon
U-sofa/Dinette with dining table for 6 people in the middle of the galley (on the port side of the wheelhouse)
Double electrically adjustable captain's armchairs in wheelhouse
Openable captain's door from wheelhouse to starboard side deck
Exit to flybridge helm station from wheelhouse (via stairs and hatch)
VIP Cabin with large double berth, TV, desk, opening side windows, blackout curtains, wardrobe/storage and own entrance to bathroom (midships port side)
Bathroom with double entrances (from hall and VIP Cabin) with Corian worktop, Dometic electric flush toilet, storage, mirrors, blackout curtain and separate shower cubicle with bench seat (port side)
Guest Cabin with single beds, TV, bedside tables, opening side windows, blackout curtains, large wardrobe/storage and mirror (midships starboard side)
Bathroom with Corian worktop, Dometic electric flush toilet, storage, mirrors, blackout curtain and separate shower cubicle with bench seat (starboard side)
Forward Master Cabin in the bow with large double bed, TV, opening side windows, blackout curtains, double large wardrobes, storage lockers and double top hatches with mosquito nets and blackout curtains
Automatic fire extinguishing system Seafire in engine room
Manual fire extinguishers
Fender holder
Fenders and mooring lines
E.t.c.

Beschreibung

Alle Angaben ohne Gewährleistung!
Bitte fordern Sie weitere 180 Fotos an!

Details Newsletter:

Fairline Squadron 58 Fly - Baujahr: 2007
Boot aus erster Hand - schöner Zustand - voller Service 2024

Länge: 17.93 m - Breite: 4.85 m - Kabinen: 3+1 - Toilette/Dusche: 3/3
Motor: 2x Volvo Penta D12-800 EVC (2x800 PS) Betriebsstunden: Ca. 840

Ausstattung:

Teakdeck auf der Badeplattform, im Cockpit und auf der Treppe, Sonnendeck mit Sonnenpolster und Getränkehalter auf dem Vordeck, komplettes Cockpitverdeck achtern, Verdeck auf der Flybridge, Klimaanlage mit umschaltbarer Kühlung/Heizung in allen Kabinen (incl. Generator Onan 17.5kW, Bugstrahlruder Side-Power (leistungsstarkes Modell), Extra Steuerstand auf Achterdeck/Cockpit zum Anlegen, Hydraulische Gangway Besenzoni im Heck (hebt 350kg), GPS Plotter/Multiscreen Raymarine E120 mit Echolot & Radar an beiden Steuerständen, Radar Raymarine (offener Flügel), Autopilot Raymarine (an beiden Steuerständen), Tridata Kompass (Kurs, Tiefe und Geschwindigkeit) Raymarine an beiden Steuerständen, UKW-Funk, Raymarine an beiden Steuerständen, Ruderlagenanzeige an beiden Steuerständen, Kompass (an beiden Steuerständen), und vieles mehr!

Wenn Sie interessiert sind, fordern Sie bitte eine detaillierte Spezifikation mit ca. 200 Fotos an oder klicken Sie auf den folgenden Link.

Verkaufspreis inklusive Steuern und Maklerprovision
ex. Göteborg/Schweden
€ 423.900,--

Kontakt



Verkäufer: gewerblich
bcm-yachtsales GmbH

Herr Dirk Michels
Telefon: +49.(0)251 / 39 46 92 39
Telefax: +49.(0)251 / 39 46 92 35
Mobil: +49.(0)151 / 14 23 53 23

<https://www.bcm-yachtsales.de>
info@bcm-yachtsales.de