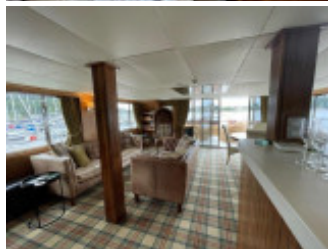
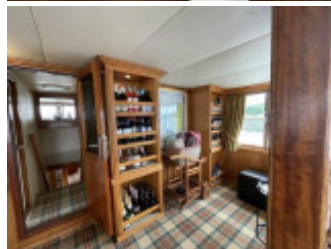


Motor Yacht Karadeniz 34m

Motoryacht, Gebrauchyacht, GB Ardrossan

€ 1.144.608,-

MwSt. exklusiv



Details

Baujahr: 1999
Erstwasserung: 0
Länge: 33,32 m
Breite: 7,00 m m
Tiefgang: m
Gewicht: 185000.000 kg
Motortyp: Caterpillar
Kraftstoffart: Diesel
PS/kW: 880 / 647
Kraftstoff: 12585 l
WC/Nasszelle: 0

Ausstattungen

Beschreibung

SPIRIT OF FORTITUDE is a 34.14 m Motor Yacht, built in Turkey by Karadeniz and delivered in 1999.. Her top speed is 13.5 kn and she boasts a maximum range of 1400.0 nm when navigating at cruising speed, with power coming from two Caterpillar diesel engines. She can accommodate up to 15 guests however is commercially coded to 12, with 5 crew members waiting on their every need. She has a gross tonnage of 199.0 GT and a 7.0 m beam. She was designed by Yavuz Osman Mete, who also completed the naval architecture. SPIRIT OF FORTITUDE is one of 2062 motor yachts in the 30-35m size range, and, compared to similarly sized motor yachts, her volume is 13.24 GT above the average. SPIRIT OF FORTITUDE is currently sailing under the Malta flag, the 3rd most popular flag state for superyachts with a total of 1030 yachts registered. She is known to be an active superyacht and is coded for charter having successfully operated as a charter yacht under Maltese Flag for Seven years.

Description Spirit of Fortitude is a motor yacht with an overall length of 34.14 m. The yacht's builder is Karadeniz from Turkey, who launched Spirit of Fortitude in 1999. The superyacht has a beam of 7.1 m, a draught of 2.13 m and a volume of 199 GT. Spirit of Fortitude features exterior design by Yavuz Mete. Up to 12 guests can be accommodated on board the superyacht, Spirit of Fortitude, and she also has accommodation for 5 crew members, including the ship's captain. Spirit of Fortitude has a steel hull and a steel superstructure. She is powered by 2 Caterpillar Inc engines, which give her a top speed of 13.5 kn. The yacht carries 12,585 litres of fuel on board.
Construction All Steel construction with recent plate sounding. **Underwater Profile** The vessel has twin rudders, and a central keel. Twin prop shafts.

Mechanical The vessel is equipped with two Caterpillar 3406 Turbo charged 6 cylinder diesel engines. Engine throttle and gear position is controlled via a Morse Control System. Engine controls are located on the bridge. Engines can be started and stopped from both Engine room and Bridge. Main Engines 2x CAT 3406 440 hp each Cruising Speed 9 knots @ 1450rpm Max Speed 12 knots @ 1900rpm Range 1400Nm at 8 knots (1400rpm) Fuel Capacity 12585 Ltrs Power requirements Single phase 32 Amps minimum. Generators Port ONAN 80kW Starboard IVECO 50kW Bow thruster Vetus 33kw 550kgf (New 2016) Stern Thruster Vetus 33kw 550kgf (New 2016) Water Capacity 5350 Ltrs **Steering** The vessel has two means of steering operation wheel and jockey stick **Electrical** The vessel's power distribution is separated into a Port System and a Starboard System, irrespective of the power source. The engine room contains Port and Starboard side Relay boxes, which are linked. Therefore by selecting the correct switches, both sides will be supplied from a single power source. There are two shore power connection points, one located in each of the port and starboard lockers on the swim deck platform, each can accept 32A - 240 volts. **Single phase supplies are required.** Shore cables are stored inside the rear swim deck lockers when not in use. Selecting shore power is from the bridge instrument control panel. Setting also depends on the port or starboard side of the connection, select the shore power from whatever side of the vessel is connected to the shore cable, set the other side of the vessel system to Parallel. **Inverter - 24vDC to 240vAC** The inverter located under the bridge console on port is currently providing power to the ships laptop, Wifi repeater and any other sensitive items on the bridge. **Water Heating** The vessel is equipped with two methods of hot water heating two calorifiers that operate as part of the diesel fired central heating system. Also an Electric Immersion Heater. **Hot Water from the Central Heating** Two calorifiers, each of 275 litres are operated by the central heating control programmer. Each of the calorifiers can be isolated for periods of reduced consumption The vessel is equipped with a diesel fired central heating system (installed 2018) The Marpol (marine Pollution) tank is located below the floor in the Crew Mess Area. **Water Maker**

The vessel is fitted with one water maker the unit capable of producing 15.9 litres per minute feed water flow giving 75 gallons (284 litres) per hour/ 1800 gallons (6814 litres) per 24 hours. Operation requires generator power (60Hz power source) **Bilge Pump System** The vessel has various means of bilge evacuation: a) Integral Bilge system using bilge pump b) Integral Bilge system using fire pump c) Emergency diesel powered pump d) Emergency electric pump The Fire and Bilge Systems on board may be interconnected so that fire pump may be used as a bilge pump. Changeover of these pumps is performed via a crossover valve, 3 way suction valves and discharge isolation valves. **Fire System** A CO2 suppression system is fitted for major engine room fires. Controls are located in the CO2 Emergency Locker on the starboard main deck located in front of the engine room door together with ventilation and fuel shut off valves.

Accommodation There are several areas internally for clients to relax, with a full size saloon including bar and coffee area as well as large comfy sofas and a television area should you wish to watch satellite television. There is a separate large relaxing library area, designed with bespoke bookcases and furniture in oak with burr veneer inlay. Complete with panoramic windows this room is light and airy, a great place to sit and relax, reading from a selection of local and topical books from extensive book collection. Up on the Bridge Deck, the "Whisky Viewing room" benefits from longer windows and is great for viewing while sitting on a comfy sofa soaking up surroundings. As the name suggests it benefits from a well-stocked Whisky Bar, perfect place to spend evenings. The Spirit of Fortitude boasts six luxurious well designed staterooms, three having a private dining area, all with their own private en-suites with full size showers. All cabins have TV and benefit from heating as well as air conditioning. The cabins have no shortage of storage space for belongings, everyone has their own closet and drawers. There are several outdoor areas externally. On the top level of The Spirit of Fortitude there is the Sun Deck for sunbathing with built in large, foamed sunbeds, which have plenty of storage and drinks tables as well as an area for sun chairs. The Bridge Deck enjoys another ample sized sun area with large couches and chairs. There is also a built in sitting area in front of the Bridge, perfect for getting the "skipper's view". The Main Deck has a covered sitting dining area to the rear with seating for twelve. There is an ample swim platform where coffee can be served when at anchor as there are movable railings here, enabling easy access for swimming or accessing the tenders. Accommodating a maximum of twelve guests when cruising ensures that everyone has ample room. She makes the perfectly formed private charter yacht for corporate or family groups alike. She has cruised extensively, originally from the port of Piraeus, chartering throughout the Greek Isles where she became quite iconic. Latterly operating on the West Coast of Scotland, she has visited more than twelve countries, and travelled more than fifteen thousand miles. Spirit of Fortitude has an extensive list of safety equipment. She was built as a custom design specifically for luxury charter **Argyll Master state room** is a luxurious suite, located on the Main Deck level forward. With a king size bed located midships, and extensive drawers and storage cabinets either side. This cabin also has a desk/vanity area and a huge walk in wardrobe to port. On the starboard side, there is a luxury en-suite shower room with WC and vanity area complete with mirrors and lighting. A shaver point and socket is also located in this area. The headboard is designed and covered with soft Italian leather accompanied by a leather storage unit at the base of the bed. The cabin benefits from large opening windows in the bedroom, guests in this cabin are therefore assured of panoramic views on both sides of the ship. **St Kilda Stateroom.** Located forward on the port side at a lower level, this cabin is available as either a double or as a family room. There is a double bed, desk/vanity area, wardrobes, dining/coffee area with seating for four and a large sofa which converts to an additional full-size single bed. To the rear of the cabin is the luxury en-suite shower room with WC and vanity area complete with mirrors and lighting. The cabin benefits from opening porthole windows in the bedroom and en-suite **Caledonian Stateroom.** Located aft amidships at a lower level, this cabin is probably the largest on board, and is available as either a double or as a family room. There is a double bed, desk/vanity area, wardrobes, and a large sofa which converts to an additional single bed. There is also a coffee table. To the rear of the cabin is the luxury en-suite shower room with WC and vanity area complete with mirrors and lighting. The cabin benefits from opening porthole windows in the bedroom and en-suite **Hebridean Stateroom.** Located forward on the starboard side at a lower level, and a mirror image of the St Kilda stateroom, this cabin is available as either a double or as a family room. There is a double bed, desk/vanity area, wardrobes, dining/coffee area with seating for four and a large sofa which converts to an additional single bed. To the rear of the cabin is the luxury en-suite shower room with WC and vanity area complete with mirrors and lighting. The cabin benefits from opening porthole windows in the bedroom and en-suite. **Arisaig Stateroom.** Located aft on the port side at a lower level, this cabin is a double room and a mirror image of Skye stateroom. There is a double bed, desk/vanity area, wardrobes and storage cabinets. To the rear of the cabin is the luxury en-suite shower room with WC and vanity area complete with mirrors and lighting. The cabin benefits from opening porthole windows in the bedroom and en-suite. **Skye Stateroom.** Located aft on the port side at a lower level, this cabin is a double room. There is a double bed, desk/vanity area, wardrobes and storage cabinets. To the rear of the cabin is the luxury en-suite shower room with WC and vanity area complete with mirrors and lighting. The cabin benefits from opening porthole windows in the bedroom and en-suite. **Whisky lounge** has been skilfully crafted to take advantage of the superior views from the Upper Deck and is the perfect place to relax or to get to know the other passengers. Crew Accommodation for upto 6 crew including Skipper with his own cabin with en-suite Full commercial style galley.

Deck Equipment The vessel carries two Stockless type anchors weighing approximately 250 kgs each. Each anchor

has 170 metres of chain, which is colour coded (with markings at ten metre intervals) Rear Deck Capstan The anchor windlass and aft deck windlass are both powered by a large 3 phase motor that is mounted in front of the port engine. A hydraulic capstan winch is located on the rear swim deck is operated from the remote control located within the lazarette. **Passarelle** A hydraulic pasarelle is fitted to the rear of the vessel. It is operated from the control panel located adjacent to the pasarelle **Chain wash system** A chain wash system is operated through the same circuit as the fire main. **Windlass hydraulic power** Hydraulic power for the windlass is supplied from the port side engine. A hydraulic fluid tank is located in the engine room adjacent to the port engine. **Lazarette and Bosuns store** The lazarette is accessed from the swim platform. Its door is fitted with a proximity alarm to alert the bridge when it is opened Located within the store are the light switches for the swim deck platform and for the underwater lighting. The remote control for the deck capstan is also located here.

Bridge Equipment**Navigation Charts** The charts (west coast Scotland) are up to date as at Nov 2023 Furuno Radar fitted 2020 VHF The NMEA GPS and AIS data is received from the AIS transponder via USB cable Rudder angle indicator Compass Navtex AIS transponder (Class B) Distress Alarms Inmarsat C - The Inmarsat C has a distress button next to the VHF and on the screen itself DSC VHF Clock A clock and barometer are kept on the bridge. Searchlight - A searchlight is located on the instrument mast and operated from control panel at helm NUC lighting - The NUC pole is located on the roof starboard side teak bed and plugs into the charger point at the emergency battery box on the roof. CCTV - The bridge is equipped with a CCTV installation.

SafetyCurrently there are three 8 person life rafts located on board all located on the roof of the bridge, each fitted with hydrostatic devices to release automatically in the event of contact with water. The deck area has emergency lighting in the event of release in the hours of darkness. All Life-Rafts are retained under annual leasing and servicing agreements The vessel carries eighteen number **Emergency Escape Breathing Devices**, The vessel carries 23 number life jackets including four children's jackets. All lifejackets are SOLAS/wheelmarked. There are also a number of sports jackets which may be used whilst aboard the tender. The vessel carries five life rings, two located forward, mounted on the bulwarks of the Main Deck forward, and two mounted on the rear of the Bridge Deck behind the crane facing astern. Each is provided with 30 metres of floating line which is fastened securely to the vessel. An additional life ring carries a smoke device. Two Immersion Suits Two Throwing line devices **First Aid** Two forward rings have self-igniting lights fitted First aid points are located on the bridge (main) and in the main dining saloon bar area (supplementary/domestic items). Thermal Protective Aid suits (17 number) are carried on board in the bridge, under the seating area.

Features

- Log speedometer
- Navigation center
- Dishwasher
- Depthsounder
- Microwave oven
- Cockpit cushions
- Radio
- Deep freezer - and Fridge Storage
- Hot water
- Oven
- Tv set - in all Cabins
- Gps
- Shore power inlet
- Hydraulic gangway
- Plotter
- Compass
- Autopilot
- Fresh water maker
- Tender
- Dvd player
- Battery charger
- Marine head
- Stern thruster
- Electric bilge pump
- Vhf - with AIS
- Washing machine - and Tumble Dryer
- Generator - x2
- Swimming ladder
- Liferaft

- Sea water pump
- Air conditioning - disconnected
- Cd player
- Manual bilge pump
- Bow thruster
- Heating
- Refrigerator - in Galley
- Radar
- Repeater
- Wind speed and direction

In this case we are acting as brokers only. The Vendor is selling in the course of a business. Whilst every care has been taken in their preparation, the correctness of these particulars is not guaranteed. The particulars are intended only as a guide and they do not constitute a term of any contract. A prospective buyer is strongly advised to check the particulars and where appropriate at his own expense to employ a qualified Marine Surveyor to carry out a survey and / or to have an engine trial conducted, which if carried out by us shall not imply any liability for such engine on our part. Note to seller and purchaser: If the boat you are selling or purchasing is registered, please ensure that the registration is completed after the sale of the boat. If the purchaser wishes to cancel the registration is the duty of the seller to contact the Registry and inform them that the registration is to be cancelled. If the purchaser wishes to continue with the registration, it is the duty of the purchaser to complete the relevant forms and post off the bill of sale to the Registrar.

Kontakt



Verkäufer: gewerblich
Sunbird International

Andrea Martin-Wright
Telefon: 01294607074

<https://www.sunbirdyachts.eu>
andrea.martin@sunbirdyachts.eu