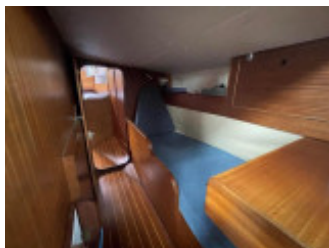
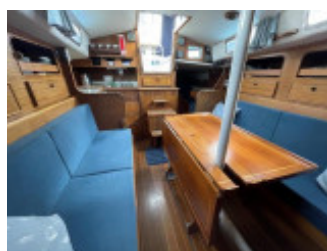


Westerly Conway

Westerly (GB), Segelyacht, Gebrauchyacht, GB Ardrossan

€ 28.759,-

EU versteuert - nein, MwSt. exklusiv





Details

Baujahr: 1979
 Erstwasserung: 0
 Länge: 10,90 m
 Breite: 3,40 m m
 Tiefgang: 1.3700 m
 Gewicht: 7316.000 kg
 Kraftstoffart: Diesel
 Kraftstoff: 114 l
 WC/Nasszelle: 0

Ausstattungen

Beschreibung

Drumbeat Westerly Conway combines comfortable accommodation in three cabins with the ability to make fast sea passages.

Laurent Giles was asked to design a powerful cruising boat with a fast, modern hull shape, a deck that is uncluttered with plenty of working space and a capacious interior. With good directional stability the keel is longer than most boats of this generation. With a fairly generous beam the hull is, nevertheless, well balanced and little helm angle is required to keep a straight course even when the vessel is overpressed.

Drumbeat has Bilge keels allowing for drying out in harbor's or shallow moorings. She also has recent Tacktick and Raymarine instrumentation. New upholstery and foam was new in 2016, and headlinings are new from 2023.

Construction and Mechanical

Construction:
 Built by Westerly Yachts Ltd in 1979
 Designed by Laurent Giles
 GRP hull deck & superstructure (Lloyds Hull Construction Certificate)
 Underwater profile Copper-coated
 Bilge keel so she can taking the ground allowing drying harbour's to be visited and maintenance to be done
 Skeg hung rudder
 Whitlock wheel steering

Deck Gear:

Sprayhood and Cockpit tent
Stainless steel pulpit & pushpit
Stainless steel davits
Stainless steel boarding ladder
Aluminium mooring cleats forward, amidship & aft
Genoa tracks with adjustable cars
Aluminium stanchions
Lewmar deck hatches x three
Dorade deck ventilators
Teak grab rails, toe rails & cockpit grating

Mechanicals:

Mercedes OM636 42hp 4 cylinder diesel.
Engine instrument panel with additional indicators
Engine Service Feb 2024
Engine hours 1,670
Shaft driven Volvo prop shaft seal
3 bladed propellor
Single-lever, morse engine control

Electrics:

2 x 12v 220ah capacity batteries
Charging from engine alternator
240v shorepower system rewired with new control panel & breakers

Tankage:

Freshwater capacity 159 litres in Alloy
Fuel capacity 285 litres Alloy

Water System:

Hot & cold pressurized water system.
Water heated via engine and shore power

Mast Rigging and Sails, Accommodation

Mast Rigging and Sails, Accommodation

Rigging:

Aluminium spars, including spinnaker pole
Ketch rig
Genoa furling system
Main Mast;
Single spreader rig
Deck stepped mast

Mizzen Mast;

Single spreader rig
Deck stepped mast

Age of Standing Rigging unknown

Winches

Lewmar Evo 45 self-tailing, two-speed sheet winches (NEW 2011)
Lewmar 40 self-tailing, two-speed sheet winches
Lewmar 16 two-speed halyard winches

Sails:

Mainsail with Battens

Mizzen Saturn Sails New 2023

Genoa Furling

Jib Furling

Accommodation :

Sleeps up to 8 in two separate cabins as well as the saloon and passageway

Forward cabin with large double V berth

Forward heads

Starboard single settee berth in the saloon

Port single settee berth that will convert to a double berth

Galley is positioned to starboard

Forward-facing chart table to port

Passage to aft cabin has a single-quarter berth

Large owners double berth aft cabin with en-suite

New LED Lighting.

Forward Cabin:

Large V berth with an infill to create a large double berth

Open shelving to port and starboard

Hanging locker

Opening deck hatch

Opening portlights

Forward Heads:

Forward heads positioned to port, aft of the forward cabin

Jabsco sea water toilet New 2023

GRP moulded hand basin

Hot and cold pressurised water

Shower hand unit

Opening portlight

Hanging locker opposite

Saloon:

Port and starboard settee berths, the starboard berth is small (backrests remove and become lee cloths/boards and adds extra width on the berth size)

Port seating converts to a large double berth

Saloon table with bottle storage

Storage below, behind and above the seating

Teak grab bars

Small opening deck hatch

Clock and barometer

Galley:

U-shaped galley positioned to starboard

Neptune 4500 Two burner gas hob, grill and oven new 2021

Stainless steel sink

Hot and cold pressurized water

Refrigerator (top opening)

Under and over counter cupboard, shelf and drawer storage

Chart Table:

Forward facing chart table positioned to port (full size for chart work)

Chart stowage

Shelf, and drawer storage

Passageway to the aft Cabin:

Sea berth positioned to port (wooden lee board)

Under berth storage

Engine access panel

Aft Cabin:

Large V berth with infill to create a large double berth
Under berth storage
2 Hanging lockers and shelves

En-suite heads

Jabsco sea toilet New 2023.
Sink with hot and cold pressurized water)

General

Opening deck hatch with ventilator
3 Opening portlights
LPG Catalytic Cabin Heater in Saloon
New upholstery and foam was new in 2016, and headlinings are new from 2023.

Inventory

Inventory

Navigation

Binncale Compass
Tacktick Wireless Tri-data for speed and depth
Tacktick Wireless wind Instrument new 2021
Raymarine Axiom 7 Chartplotter
Raymarine Evo autopilot
Garmin 451 GPS
VHF

Mooring and Anchoring

CQR anchor with 60 meters of chain and warp
Simpson Lawrence electric windlass
Double stainless steel bow roller
4 Fenders and 3 mooring lines
Boathook

Safety Equipment:

Horseshoe lifebuoy
Danbouy
Lifesling
Gas alarm system
2x Manual bilge pump
1x Electric bilge pump
3x Fire extinguishers (out of date)
Fire blanket

Equipment:

Canvas sprayhood
Canvas cockpit enclosure with s/s supports
Dodgers
Davits
Boarding Ladder
Beeching Legs
Radio CD player

Accommodation

6 singles 1 double

Kontakt



Verkäufer: gewerblich
Sunbird International

Andrea Martin-Wright
Telefon: 01294607074

<https://www.sunbirdyachts.eu>
andrea.martin@sunbirdyachts.eu