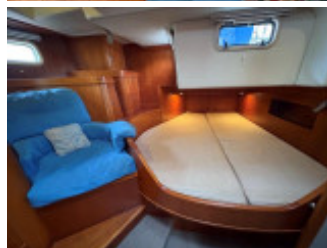
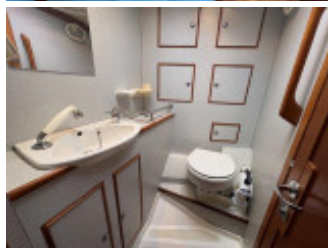


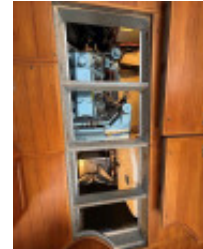
Seastream 43

Segelyacht, Gebrauchyacht, GB Ardrossan

€ 169.103,-

EU versteuert - nein, MwSt. inklusiv





Details

Baujahr: 1995
 Erstwasserung: 0
 Länge: 13,80 m
 Breite: 4,40 m
 Tiefgang: 1.8000 m
 Gewicht: 14300.000 kg
 Motortyp: Perkins M90
 Kraftstoffart: Diesel
 PS/kW: 92 / 68
 Betriebsstunden: 3600
 WC/Nasszelle: 0

Ausstattungen

Beschreibung

Specification

Introduction The Seastream 43 is a boat that has stood the test of time and has earned a reputation as a solid and reliable bluewater cruiser. Many Seastream 43 owners have sailed around the world or across oceans with this boat, and they have nothing but praise for its performance and seaworthiness. Tourensol is the MkII version and has been well equipped with heating, generator and safety equipment. She is currently ashore here at Clyde Marina, Ardrossan in Scotland

Construction Isophthalic resin throughout the hull (very high, water-resistant resin). Epoxy coated bottom prior to launch (6 months after moulding) Main deck, Epoxy laid 'overdeck' Bridge deck laid teak Cockpit laid teak and gratings Solid teak saloon and galley soles All cherry construction interior with superb high polish satin finish

Machinery Perkins M90 4 cylinder naturally aspirated diesel engine, 92Hp (62kw) at 2800rpm, 3600hours at spring 2025 Vetus 80KGF thrust bowthruster Bruntons 21", 3 blade folding autoprop propeller, with shaft STRIPPER rope cutter and Shaft lock

Electrical Main system 24V Ardverk battery management system 4 x 200Ah Gel batteries 2 x 80Ah Engine management batteries Sterling 350w inverter Shorepower cable with polarity reverser link HFL 6kVA generator with full ring main services – 130 hours Spring 2025 Eberspacher 24V heating system throughout

Water System Sea and freshwater systems including 'Naturepure' drinking water filter and separate tap Hot and cold water throughout the ship from engine driven calorifier or immersion heater Engine driven 1" bilge or seawater pump Eberspacher 24V heating system throughout

Tankage Water capacity 120 gallons (546 litres) Fuel Capacity 160 gallons (728 litres) Black tanks to each head with manual pump out Grey tank for domestic wastes with electric pump out Tank tender level monitoring

Sails and Rigging Proctor spars in white Awlgrip Proctor in-mast furling for mainsail Gas rod kicker for main boom Telescopic Spinnaker Pole Folding climbing steps up to fixed steps at top of mast Rigging wire all stainless steel 1x 19 with swaged terminals and anti-chafe rollers Schaefer roller furling for headsails Clear step lead blocks for all furling controls to cockpit with jamming blocks Mainsheet heavy duty double lead Reefing controls, kicking strap, track controls to winches/jammers under folding sprayhood

Sails Mainsail, genoa and staysail serviced annually by Saturn Sails. Mainsail 400sq ft (37.17 sq.m) – in mast Furling with vertical battens Roller Genoa 675sq ft (62.73 sq.m) – Furling Staysail 255 sq.ft (23.70sq.m) – Furling Second

Staysail 230 sq ft (21.0sqm)Hood Cruising Chute and snufferExtra halyards, Spinnaker sheets and snatch blocks
WinchesAnderson 58 Primary Electric Self-tailingAnderson 46 Staysail Manual Self-tailingAnderson 40 Control winch
Self-tailing

AccommodationForepeak 2 berths usual layout with double optionPullman cabin 2 bunk berths, convert to snug with sofa seatForward heads with showerMaster Cabin 2 berths, double layout with splitting lea cloth, carpet, alcantara upholstered easy chairAlcantara upholstery in saloon with coversAft heads with shower cubicle off Masters cabinDeck saloon/wheelhouse with extending dining table and optional tabletop with fiddlesCurtains on all saloon windowsForward opening saloon windowsOpening hatches on all cabins with sky screens to allDomestic EquipmentCalor gas system with 3 bottles in bow locker, with automated solenoid control, bubble tester and gas detection4 burner stainless steel gimbale cooker with grill and ovenDouble stainless sinks with swivel tap and filtered fresh drinking water tapIsotherm Refrigerator (100ltr)Cold box water cooled refrigerationMicrowave cooker built inFull range of crockery, utensils240v appliances include fan heater, kettle.Sony AM/FM/CD player with 4 internal speakers and optional 2 cockpit speakers

Navigation EquipmentFuruno GPS in pilot houseFuruno plotter/radar mounted in pilothouseRaymarine plotter/radar mounted on cockpit pedestalMasthead radar reflectorSailor VHF with cockpit speaker (2006)Icom VHF in master cabinGarmin handheld VHFGPS AerialElectronic BarometerBarometerAntennae pole on starboard transomRadar pole on port stern with Raymarine Radar

Mooring and Anchoring Double roller stemhead fittingAnchor lockerAnchor windlass with 25Kg Cobra Anchor and 55metres of 12mm new 2025, galvanised chainKedge Anchor 20Kg Danforth with 10m galvanised chain and 50m multiplait warpFishermans anchor 42KgFull cleats, fairleads and chafe stripsFenders and WarpsBoathook

Deck EquipmentSchaeffer clear step furling leads on all stanchionsBoarding gates on both sides with fold-down stepsPulpit walk throughPushpits split with individual seatsDeck mounted custom sheet control lead mountsStopper for all halyards lead to cockpit controlLewmar deck hatches, 7 in allWaterbox vents to galley and lateral cabinSprayhood with handles, window covers and opening hatchFolding step in cockpit for helmsmenStainless steel pushpit with plotter, instruments, and controlsCockpit safety padeyes for harnesses and deck jackstays to bowTeak folding cockpit tableCockpit speaker systemTransom boarding ladder, folding in stainless steelWhitlock covered steering wheel with steering system on pedestalAvon roll up 6-man dinghy with oars and mounting for outboardYamaha 2.5Hp outboard

Safety EquipmentSafety liferaft, 6-man Avon in deck canister, serviced 2024Johnbuoy man overboard recovery system on pushpitGas detection system and alarm connected to shutdownHandheld fire extinguishers in lazarette, galley and stairwellAutomatic fire extinguisher in engine compartmentSafety fire blanket in galleyEPIRB ACR 406 (2005) Grab bag with flaresEmergency VHF aerialSafety linesAnchor light and ballFirst Aid kitBoarding ladder

Owners CommentsTOURNESOL is a beautifully built and maintained cruising yacht on which the current owners have cruised over the last 16 years to Ireland, the Scottish West coast, Orkney and Shetland. In addition, trips in foreign waters include the Faeroes, the Norwegian west coast, Bearisland and Spitzbergen to above 80 degrees latitude.Tournesol is fitted out and maintained ready for serious cruising as may be seen from the comprehensive list of upgrades and extensive spares. Her weight, hull shape and plenty of sail area give her an easy motion and good passage times.Tournesol is considered to stand comparison with Oysters, Hallberg Rassy, Bowman and is reluctantly for sale due to changes in family circumstances.**Resent upgrades 2024/25**

Replace domestic water system, calorifier, and engine hosesReplace domestic water filterReplace engine fuel filter systemReplace main engine HP fuel pump and service injectorsReplace bearing on propellor shaft and rebuild rope cutterNew anchor chain, 55metersMain sails serviced annually by Saturn SailsSprayhood repair and overhaulReplace bow navigation lightLiferaft service**2023**Replace autopilot including remote controlChange main water pump impellorNew manual EPIRB with GPSNew flaresReplace main forward seacockChange mechanical bilge/deckwash pumpService JonbuoyReplace Deep Sea seal **2022**New Raymarine Element chart plotter/radarInstall Furuno plotter/radar in pilot houseProfessional service of gas systemChange both 12v starter batteriesChange main stern sealService Schaefer 1100 staysail furlerReplace main engine wet exhaust hose**2021**New Eberspacher installedChange Vetus GD gas sensorChange galley tapsReplace mast sealNew forward heads pump and full service for aft heads pump**2000**Repaint mast and refurbish/ replace all fittingsService main reefing and roller reefingRenew all standing riggingNew Teak bridge deckNew gas sensorInstall AIS

Summary

The Seastream 43 is a boat that has stood the test of time and has earned a reputation as a solid and reliable bluewater cruiser.Many Seastream 43 owners have sailed around the world or across oceans with this boat, and they have nothing but praise for its performance and seaworthiness.Tourensol is hte MkII verison and has been well equiped with heating, generator and safety equipment.She is currently ashore here at Clyde Marina, Ardrossan in Scotland

Kontakt



Verkäufer: gewerblich
Sunbird International

Andrea Martin-Wright
Telefon: 01294607074

<https://www.sunbirdyachts.eu>
andrea.martin@sunbirdyachts.eu