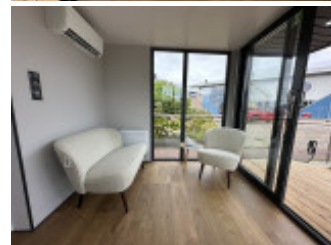


La Mare Houseboat STB 4.0 (Canalboat 4)

Motoryacht, Neuyacht, NL Demo Houseboats op afspraak te bezichtigen T: +31

€ 75.900,-

MwSt. exclusiv



Details

Baujahr: 2024
Erstwasserung: 0
Länge: 10,00 m
Breite: 4,00 m m
Tiefgang: 0.5 m
Stehhöhe: 2.05
Gewicht: 8000 kg
Motortyp: Yamaha 9,9pk
Motoranzahl: 1
Kraftstoffart: Benzin
PS/kW: 9 / 7
Kojen: 4
WC/Nasszelle: 0
Trailer: ohne Trailer

Ausstattungen

Pantry

Gefrierschrank

Technik

Landanschluss 230 Volt, Solaranlage zum Batterieladen, Inverter, Batterie

Sicherheit

Feuerlöscher, Navigationslichter

Zubehör

Badeleiter

Beschreibung

Houseboat built specifically for rental. Sturdy, thoughtful houseboat at a competitive price this Canalboat 4 B2B from LA MARE Houseboats.

New from LA MARE Houseboats this Canalboat 4 (B2B). With the Canalboat 4 LA MARE Houseboats offers, especially for rental, to all business buyers an interesting B2B model.

? #1 yard in Europe, already 475 houseboats built

? Robust and strong for a solid rendment

? Compact for every port

? Smartly furnished with 2 bedrooms

? Well insulated for year-round rental

Durable and low maintenance

Rental profitability starts with the right boat. With this houseboat, that's a sure thing!

The addition 'B2B' stands for 'business to business' which means that this model is offered mainly for business buyers. A houseboat especially for rental. Privately interested parties can go to this yard in beginsiel with her 'Apartboat' or 'Modern' Series. Still interested? Ask us about the possibilities.

General

Hull shape: Catamaran with HDPE floats, fully foamed.

Steering system: Steering position with hydraulic steering on outdoor deck. (Optional in sailing package)

Windows: Clear, double-glazed, laminated. In aluminum frames.

Hull number: Already >475 houseboats built by this yard.

Other: La Mare Houseboat, The New Way of Boating

Standard Specification Canalboat 4 (B2B) - From EUR 75,900 excluding VAT.

Polyethylene floats, unsinkable, Catamaran

Strong galvanized steel frame

Strong timber frame construction with plastic finish

5cm PIR foam Insulation

Clear, double glazed, laminated.

No cold bridge - no condensation

Water tank 400 Ltr, Dirty water tank 400 Ltr, including water pump, dirty water pump, piping, filler cap and level gauges

Electric radiators and electric hot water heater. (Heat pump air conditioning optional)

Outdoor terrace, clad in Scandinavian wood, incl. railings black powder coated.

Ceiling made of PVC panels with LED lighting

Plastic laminate

Interior walls covered with fiberglass wallpaper, incl. painting

Bathroom: shower, sink, mirror, electric toilet, fan

Kitchen equipment: standard cabinets, lighting, 2-burner induction hob, sink and refrigerator.

Interior doors with portholes and high-quality door hardware, exterior doors and windows in aluminum profiles

4 frogs, stainless steel

Wooden fender

CE-D

Full maintenance and warranty inspection after 1 year of use.

2 years full warranty.

Further equipped with:

Sailing Package Basic: Yamaha 9.9hp High Trust, electric start, 60Ah starter battery, 70 liter fuel tank, steering console with hydraulic steering, reversing camera, hand rail around superstructure, navigation lights and horn. EUR 16.000,-

Cruising package Plus: 2x Yamaha 9.9hp High Trust, electric start, 60Ah starter battery, 70 liter gasoline tank, steering console with hydraulic steering, reversing camera, hand rail around superstructure, navigation lights and horn. EUR 24.000,-

Bow thruster: Vetus 55kgf, 24V, with own batteries and battery charger. EUR 8.200,-

Sustainability package: 4x 400Wp solar panels, ESB 10kW 48V/230V inverter with bluetooth integration, BS-5000 (5kWh) 'home battery' . EUR 8.000,-

Air conditioning with heat pump EUR 3.850,-

Accommodation

Saloons: Salon with kitchenette, bathroom with shower/toilet, bedroom 1, bedroom 2.

Cabins: Also available as a 2 person houseboat with space for freestanding bed.

Other: LA MARE Houseboats offers this model at a competitive B2B price. This competitive price comes about by

limiting options and/or design choices. Feel free to ask what design choices are available.

Engine, electrics, water

Number of identical engines: Boating package is optional with 1 or 2 engines

Solar panel: 4x 400Wp (Optional)

Water system: Standard with water pump and fixed city water connection

Water tank & material: Incorporated into float.

Equipment

Sea rails, pushpit, pullpit: Black powder coated

Safety

CE-standard: by notified body

Kontakt



Verkäufer: gewerblich

Sailing World Yacht Brokers

Werner Höner

Telefon: +49.(0)436290 05 93

Telefax: +49.(0)436256 32

Mobil: +49.(0)170 / 541 65 55

<https://www.sailingworld.eu>

info@sailingworld.eu