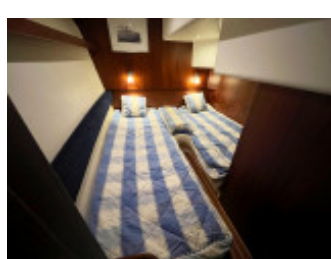
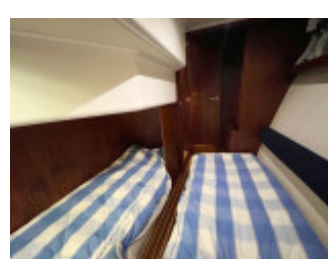
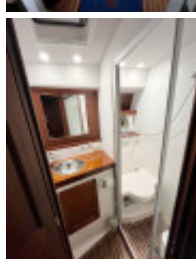
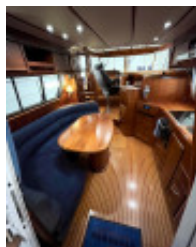
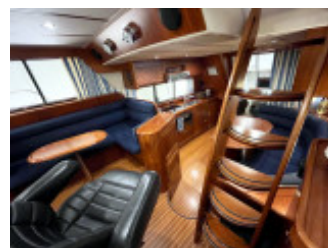


Storebro 475 Commander (New price)

Storebro (SE), Κινητήρες, Μεταχειρισμένη θαλαμηγός, Schweden Nähe Gotheburg

€ 279.000,-

Φορολογητέα στην ΕΕ, VAT paid, VAT included



στοιχεία

Έτος κατασκευής: 2004
Έναρξη: 0
κατάσταση: καλοδιατηρημένο
Μήκος: 14,20 m
Πλάτος: 4,25 m m
Μετρητής: 1,00 m
Βάρος: 13000 kg
Υλικό σκελετός: GRP
Υλικό Συναρμολόγηση: GRP
Drive:
Τύπος κινητήρα: Volvo Penta TAMD 75P
Αριθμός κινητήρων: 2
Τύπος καυσίμου: Πετρελαιοκίνητο
Ίπποι/kW: 2 / 1
Ώρες λειτουργίας: 2620
Δεξαμενή γλυκού νερού: 600 l
Νερά πλύσης: 167 l
Καύσιμο: 1560 l
Καμπίνες: 3
Κουκέτες: 6
Τουαλέτα: 2

Εξοπλισμός

Περιγραφή

Maintenance:

The engines is serviced each year with last big revision and service 2023 with repacked radiators (8x), pressure tested injectors, adjusted lifters e.t.c. included. Latest polish & waxing of the whole boat & latest antifouling with new external zincs included in 2024. The boat is always stored indoors in tempered storage hall over the winter months

Specification:

Year: 2004 (one of the last examples)
CE-class: B/Maximum 12 persons
Country of origin: Sweden
History: Sold new in Sweden
Location: Gothenburg, Sweden
Condition: Very good
Owners:
Condition: Very good
Length: 14.20 meters
Width: 4.25 meters
Depth: 1,00 meters
Bridge clearance: 3,54m (with mast folded down)
Weight: 13 tonnes
Fuel: 2x780 liters
Fresh water tank: 2x300 liters
Black-water tank: 167 liters
Cabins: 3
Sleeps: 6
Seats: 4+10+7
Toilet/Shower: 2/3
Engine: 2x Volvo Penta TAMD 75P
Number of hp: 2x480
Running time: 2.620 hours
Operation: Shaft drive
Cooling: Fresh water

Cruising speed: 23 knots
Maximum speed: 34 knots
Fuel consumption: Approx. 3,5l/nm at cruising speed

Equipment:

Antifouling (blue)
Bowsprit with open pulpit, removable bow ladder & substantial grab bars in the bow
Wide side decks with grab bars on the side of the cabin roof
Captain's doors (lockable) on both port and starboard side of wheelhouse out to the side decks
Big teak package with teak on all decks (teak in good condition)
Aft canopy (blue)
Flybridge cover (blue)
Protective covers for L-sofa, armchairs & helm-station on flybridge
Wind protective covers for pulpit on flybridge (blue)
Special designed foldable mast on flybridge (for minimum bridge clearance)
Propellers 4 blade bronze Hamble (24x31)
Bow thruster Side-power variable speed - Remote controlled
Stern thruster Side-power variable speed - Remote controlled
Remote control Side-power to bow- & sternthrusters
Electric windlass Lofrans with stainless Bruce anchor & chain in the bow - Remote controlled
Electric windlass Lewmar with stainless Bruce anchor & chain in the aft - Remote controlled
Remote control to aft electric windlass
Hydraulic gangway/passarelle/crane Swissway in the aft - Remote controlled
Remote control to hydraulic gangway
Electric searchlight on the mast - Remote controlled
Generator Onan 9kW
Defroster Ardic in wheelhouse
Diesel heater Eberspächer Airtronic 5DL with exhaust in saloon, cabins, bathroom & toilet
Water heater 40l
New freshwater pump 2022
Water level monitor
Septic tank with discharge overboard & via deck valve
Hydraulic steering Seastar
Hydraulic trim tabs
Electronic gas & gear Volvo Penta EDC
Digital engine data Volvo Penta (on flybridge)
Central navigation computer Simrad NSO 2022
GPS-plotter/Multi-screen Simrad glassbridge 19" touch with separate hand controller 2022
Front-view echosounder Simrad - Integrated in plotter
Broadband radar Simrad 2022
Autopilot Simrad 2022 - Integrated in plotter
Dual station VHF with DSC Simrad 2022
AIS Simrad 2022
Compass
Rudder angle indicator
Windscreen wipers (3x) with flush function
Stereo/radio CD/AUX with speakers in salon, cockpit & on flybridge
Shorepower 230V with earth fault breaker
Shorepower cable
Battery bank new 2023-2024
Battery charger Mastervolt 24V
Inverter Mastervolt 2500W
Digital battery monitoring Mastervolt
230v sockets
12v sockets
Large kitchen in the salon with double sink with hot- & cold water, electric stove Bosch with 4 burners, electrical extractor hood, microwave oven, refrigerator Isotherm, separate fridge Isotherm & a lot of storage and staging area
Table ware Storebro (complete) with glasses Storebro, Pots, cutlery e.t.c.
Large U-shaped sofa with teak diningtable for 5 persons in the salon
L-sofa with teak diningtable for 4 persons in forward salon

Captain's chair (adjustable) in wheelhouse
Captain's ladder with handles and hatch up to flybridge from wheelhouse
Openable side windows (port + stbd) in salon
Curtains to side windows & to aft cabin sliding door
Spot lightning in roof in salon & in wheelhouse
Red navigation spot lightning in wheelhouse
Staircase with handles to lower deck hallway
Guest cabin (starboard amidships) with double single beds, wardrobe, storages, mirror & openable side window with curtain
Guest cabin (port amidships) with double single beds, wardrobe, storages, mirror, openable side window with curtain & own entrance to Guest toilet
Guest toilet (entrance from hall & direct from port guest cabin) with shower, electrical toilet with bench seat, mirror cabinet and openable side window
Big Master cabin in the bow with large double bed with extra bed mattresses & recessed lightning, drawers, wardrobes, openable skylight top hatch with blackout curtain, openable side windows and own entrance to Master bathroom
Master bathroom with electrical toilet with bench seat, separate shower, openable side window with curtain, cabinet & mirror cabinet
4-seat L-sofa with teak dining table (removable) in cockpit
Lazarette storage room under hatch in cockpit
Spot lightning in roof in cockpit
Integrated swimplatform with folding swimladder with handles, storage room & fender holders
Davits to dinghy on swimplatform
Deck shower with hot & cold water
Big solid staircase with lightning & handles up to flybridge from cockpit
5-seat L-sofa with dining table (removable) on flybridge
Sunbed with cushions for 2 persons in aft flybridge
Captain's chair (rotatable) with fold-up front seat on flybridge
Automatic fire extinguishing system (carbonic acid) in engine room (new serviced)
Manual fire extinguishers
Lighting in engine compartment
Automatic bilge pumps
Manual bilge pumps
Flag pole with flag holder
Boathook
Fender holders
Fenders
Mooring ropes
E.t.c.

Επικοινωνία



πωλητής: εμπορικός
bcm-yachtsales GmbH

Herr Dirk Michels
τηλέφωνο: +49.(0)251 / 39 46 92 39
φαξ: +49.(0)251 / 39 46 92 35
κινητός: +49.(0)151 / 14 23 53 23

<https://www.bcm-yachtsales.de>
info@bcm-yachtsales.de

