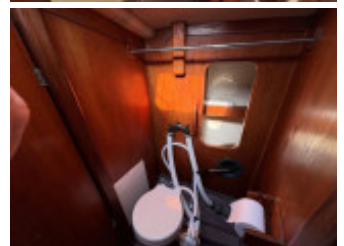
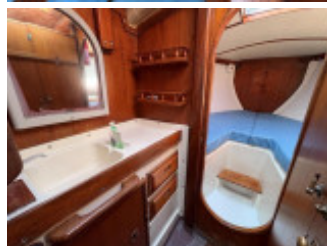
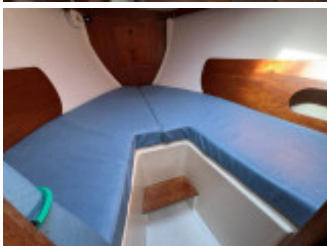
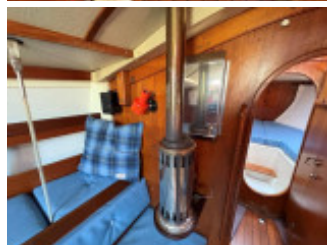
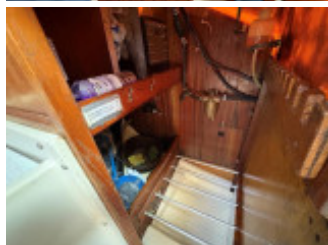


Fastnet 34

Fastnet Marine, Segelyacht, Gebrauchtyacht, GB Ardrossan

€ 21.857,-

EU versteuert - nein, MwSt. inklusiv





Details

Baujahr: 1980
 Erstwasserung: 0
 Länge: 10,20 m
 Breite: 3,41 m m
 Tiefgang: 1.7000 m
 Gewicht: 4318.000 kg
 Motortyp: Beta B-28HE
 Kraftstoffart: Diesel
 PS/kW: 28 / 21
 Kraftstoff: 95 l
 WC/Nasszelle: 0

Ausstattungen

Beschreibung

Specification

Summary The Fastnet 34 is a classic cruiser-racer from the early 1970s, known for its speed, handling, and spacious interior for its era. Designed by Jean-Marie Finot, it features an elegant hull and a low-profile curved deck/coachroof. It's a fast, beamy, and relatively light yacht with a good amount of interior space. The original cabin layout was designed for a full racing crew but can be adapted for family cruising. Seol na Mara is a one owner boat from new in 1980 and benefits from a replacement Beta engine in 2008, new standing rigging and sails in recent years.

Construction Hull GRP construction with fin Keel leading to balanced rudder with protective skeg. GRP deck with aft cockpit Epoxy treatment carried out 2010 by local yard.

Mechanical Beta B-28HE 3 cylinder diesel engine new 2008. Fresh and salt water cooled. Serviced April 2025 Shaft driven to a varifold folding prop. Rope cutter Morse controls **Electrics** 2x Batteries 105amp domestic and 100amp engine start. both new 2021 Charge via engine alternator. **Water System** Hand pumped water system to heads and galley sinks. Foot pump for fresh and hand pump for saltwater. **Tankage** Diesel Tank with 95 litres capacity in plastic 2x Water Tank with 130 litres capacity in bladder's

Mast Rigging and Sails Alloy Mast head mast by Kemp Standing rigging replaced April 2021 Various running rigging replaced since 2021 to 2025 Slab reefing main Furler furling genoa Spinnaker gear Jockey pole **Sails** Main Sail by Saturn Sails new 2023 Furling Genoa Saturn Sails New 2020 Radial head cut Spinnaker purchased 1990 Wind Seeker Ghoster purchased 1992 Working Jib 1980 Storm Jib 1982 **Winches** 2x Lewmar 40 2 speed primary winches 2x Lewmar 16 2 speed Spinnaker winches 4x Lewmar 16 2 speed Halyard winches 1x Lewmar 1 speed Mast winch

Accommodation Sleeps 8 in 3 cabins included saloon conversion **Saloon:** U-shaped dinette area with solid oak saloon/dining table with folding leaves Table converts in to a Double berth 2 Single berths port Shelving and stowage Light Blue upholstery Cabin liner and teak interior Teak and holly flooring Midships navigation station with chart table and instrument panel facing aft. Portlights **Forward Cabin:** Door separating from saloon V berth with infill to create double-berth Storage space Opening hatch Aft Cabin: Owners cabin 2 m berth Door separating from saloon Stowage Opening hatch **Galley:** L-shaped galley stbd side with formica countertop Aquachef Gas hob and oven/grill Stainless-steel sink **Heads:** Manual toilet Wash basin Mirror Wet hanging locker and stowage
 Refers 66 Heater

Inventory

Navigation Sestrel porthole compass. NASA Clipper Log and speed. NASA Clipper Depth. Garmin Sonar. NASA Clipper Wind speed and direction with wireless transducer. Garmin Gpsmap 708 chartplotter. NASA clipper repeater. Simrad TP10 Tiller pilot. Cobra VHF. Sailor Compact TR2018 VHF radio. Xinon Chartplotter with AIS. AIS class B Transponder. Fuel and battery monitors

Mooring and Anchoring 15kg Delta with 150m anchor chain 15kg Bruce kedge anchor with 6m chain and 40m warp. Lewmar PR series electric windlass. 6 warps. 6 fenders. 2x Boathook plus mooring connectors.

Safety Equipment Liferaft service 2025 Gas Detector. CO detector Bilge pump. 2 manual and 2 electric Seago Liferaft serviced 2022. Fire Blanket. 2 Life-Ring. with drogues Fire extinguishers 2 manual 1 auto Fire Blanket. Mast head tri-colour and steaming lights **General** Sprayhood Boarding ladder on stern Avon Redcrest dinghy Radio. and CD player Lagun Cockpit Table Clock and Barometer

Summary

The Fastnet 34 is a classic cruiser-racer from the early 1970s, known for its speed, handling, and spacious interior for its era. Designed by Jean-Marie Finot, it features an elegant hull and a low-profile curved deck/coachroof. It's a fast, beamy, and relatively light yacht with a good amount of interior space. The original cabin layout was designed for a full racing crew but can be adapted for family cruising. Seol na Mara is a one owner boat from new in 1980 and benefits from a replacement Beta engine in 2008, new standing rigging and sails in recent years.

Kontakt



Verkäufer: gewerblich
Sunbird International

Andrea Martin-Wright
Telefon: 01294607074

<https://www.sunbirdyachts.eu>
andrea.martin@sunbirdyachts.eu