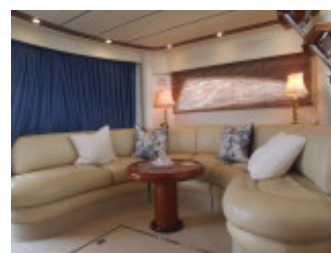


Fairline Squadron 55

Fairline (GB), Motoryacht, Gebrauchyacht, GB Ardrossan

€ 253.079,-

MwSt. inklusiv





Details

Baujahr: 2001
 Erstwasserung: 0
 Länge: 16,99 m
 Breite: 4,65 m
 Tiefgang: 1.0900 m
 Gewicht: 20235.000 kg
 Motortyp: Volvo Penta D12
 Kraftstoffart: Diesel
 PS/kW: 700 / 515
 Betriebsstunden: 500
 Kraftstoff: 1091 l
 WC/Nasszelle: 0

Ausstattungen

Beschreibung

Summary

'Mia Sandie' is an excellent example of this popular Fairline motor yacht. She is equipped with a pair of Volvo D12's (700hp each) and comes with an accomplished specification. Very low hours for her age and very well looked after. This low hours Squadron 55 is a must-see if you are in the market for a powerful flybridge motoryacht. Fitted with Onan Generator, Eberspacher heating to all cabins full Electronicspackage. Viewing highly recommended.

Specification

'Mia Sandie' is an excellent example of this popular Fairline motor yacht. She is equipped with a pair of Volvo D12's (700hp each) and comes with an accomplished specification. Very low hours for her age and very well looked after. This low hours Squadron 55 is a must-see if you are in the market for a powerful flybridge motoryacht. Fitted with Onan Generator, Eberspacher heating to all cabins full Electronicspackage. Viewing highly recommended.

DESCRIPTION This low hours Squadron 55 is a must see if you are in the market for a powerful flybridge motoryacht. Fitted with the twin Volvo Penta D12 700 HP engines. Fitted with Eberspacher heating to all cabins and heads cabins. Her elegant poise and purposeful lines owe much to her illustrious sisters, but the Fairline Squadron 55 has some distinguishing features of her own. Note the curved aft doors and the unique, scooped shape of the side windows. Moving about the Squadron 55 is safe and easy. There's an internal staircase from the flybridge to the bridgedeck, and wide side decks forward or to the saloon and cockpit area. The extra-long flybridge provides a

spacious, open-air deck saloon which includes a semi-circular dining area with a bar, fridge, sink and barbecue griddle. There is also a full-width aft sunbed and double and single helm seats. With direct access by way of the internal stairway, or from the cockpit up the teak-tread ladder, this is a favorite part of the boat for owners and guests alike. At the stern, comprehensive amenities for aft boarding and swimming have been made possible by the design of the large, extended bathing platform. A hydraulic telescopic passerelle with built-in dinghy-handling facilities; plenty of rope, fender and to stowage; and a hot and cold transom shower are also found here. The spacious and relaxing aft saloon includes a large and sociable semi-circular seating area, an elegant sideboard with TV and VCR, and a comprehensive bar with an icemaker. The separate dining area is on the bridgedeck, with excellent visibility through the main screen and side windows. The central, low-level galley, equipped to the highest standard, also has easy access to the well-fitted utility room complete with an ironing board. There is also a very convenient internal access door to the engine room from the utility room. Guest accommodation is extensive as well as beautifully appointed. There's a master suite forward and two twin-bedded guest cabins, plus two large washrooms with separate circular shower enclosures. An optional double aft crew cabin can also be chosen.

MECHANICALSEnginesTwin Volvo Penta D12 700 HP enginesAccess through utility RoomEngine/Generator Room SoundproofedWater Cooled Engine Exhausts with silencers and side outletsAerodynamically designed engine air intakesAutomatic Engine Room Fire ExtinguishersStainless Steel TEMET ShaftsContra-rotating Manganese Bronze PropellerManganese Bronze 'P' BracketsBalanced Manganese Bronze RuddersCathodic ProtectionAutomatic Bilge Pumps for Engine and Rudder Bays and Forward Area (Manual 'on' override for all pumps)High Capacity Emergency Manual Bilge Pump System with Changeover ValvesElectric Engine Room Ventilation FansEngine Room LightsExhaust Overheat Warning System for both EnginesDripless Shaft SealsSeacocks on all inlets/outlets below waterline**FUEL SYSTEM**Twin 240 Gallon (1091L) marine grade alloy fuel tanks give 480 gallons fuel capacity in total.Changeover valve system to permit each engine to draw fuel from and return fuel to either tankIndividual Fillers and VentsAircraft grade fuel filler and vent pipesHigh capacity water separators and fuel filtersAudio/Visual 'water present in fuel filters.All 12V,24V and 240V circuits protected by circuit breakers on main electrical load control panel12V = Voltage dropper from domestic batteries provides power where necessary for navigation and radio equipment only.24V=2 pairs of 180 a.h. batteries supply domestic services and port engine starting. These batteries accept charge from bothengines. One pair of 180 a.h. batteries exclusively for starboard engine starting. Battery coupling system permits eitherbattery to start either engine.240V - 7.0 kW 240V Onan Generator plus Shorepower Supply. Socket outlets in aft saloon, dinette, galley, engine bay andcabins. Spare circuit breakers for optional equipment. All sterngear, engines, fuel tanks etc, electrically bonded, 60 ampregulated charger. polarity check and earth leakage trip protection system.Isolating switches to all batteriesBlue Lights to cockpit and bathing platform - floor levelBlue lights to flybridge flr level x 4While Lights to flybridge arch x 2Single power socket to Saloon x 2Radio/CD playerMatching Aerials to ArchTwin Dome TV + Matching Dome**WATER SYSTEM**2x 55 Gallon Water tanks16 Gallon (73L) Calorifier hot water system1kW 240v immersion HeaterAutomatic Pressurised SupplyManual override switch at lower helm

CONSTRUCTIONDesigned by Bernard Olesinski and the Fairline Design Team. Deep 'V' forward; 18 degree deadrise aft, Isophthalic gelcoatbacked by an isophthalic resin-rich power-bound glass mat. All gelcoat and glassfibre is laid up by hand, incorporatingchopped strand glass mat and unidirectional and woven rovings.Transverse and longitudinal strengthening stringers throughout hull. Full length moulded spray deflectors.The integral bathing platform gives the boat a longer waterline length for improved performance, particularly at reducedpower settings.Engine bearers are moulded into the hull. The propellers are set in semi-tunnels enabling the engines to be located furtheraft, also reducing draught and improving efficiency by reducing the shaft angle. Hull/deck join bonded and bolted.The deck incorporates polyurethane foam cores for high strength and excellent thermal insulation.An 8hp bowthruster is fitted with controls at both helm positions.White hull and superstructureNavy Blue and Silver waterline trim**DECK GEAR**Stainless Steel Stemhead RollerDelta Anchor with 25 fathoms calibrated chainTwin Stainless Steel Bow and Stern Cleats2 x pairs Stainless Steel Spring CleatsStainless Steel Cleat and Grabrail on each Aft WingStainless Steel Pulpit, Pushpit and Side Deck Rails with solid second rail and Fender BasketsStainless Steel Flybridge Side GrabrailsStainless Steel Rubbing StrakeFull Set of IMCO Navigation LightsRiding LightWater and Fuel FillersDeck LightMoulded Slip-resistant Deck SurfaceSunbathing Area on Foredeck Upholstered with CushionsTeak-Laid extra large bathing Platform with concealed Transom Ladder and Dinghy StowageHydraulic Passerelle for access and Dinghy HandlingElectric Anchor WinchHot and Cold Transom ShowerTwin Horns**AFT DECK**Self-draining CockpitTeak-Laid FloorAccess hatch to optional aft crew cabinSelf-draining wet lockerAccess hatch to large stowage hold (supported on pneumatic struts)Twin transom gates to bathing platformTwin warp stowage lockersCockpit LightsManual bilge pump lockerStainless Steel access ladder to flybridgeBoat HookHeavy Duty 12V SocketSelection of Fenders and Mooring Warps**UPPER AND LOWER HELMS POSITIONS****SLOWER HELMS**Stainless steel framed windscreen with opening side panelsMadrona Finish Instrument PanelDouble Helm SeatRaymarine E120 MultifunctionDisplay:Radar/Chart/Sounder1 Camera/MOB SystemIcom M505 DSC VHFHydraulic Power SteeringTriple Windscreen WipersElectronic Single Lever Controls for Engines and GearboxesBowthruster ControlsRaymarine ST60 Tridata SystemRaymarine ST6001 Autopilot ControlHelm position indicator plus full engine instrumentation + gaugesRemote Anchor Winch ControlsChart table and Light/StowageControl panel for

generatorSwitches for Navigation and Riding LightsWindscreen WipersBilge Pumps and Engine bay extractor fansExternal PVC sunblinds to windscreenStereo Radio/CD Player12v point for Mobile phoneRaymarine RAY 430 Foghorn with siren and Loudhailer facility**UPPER HELM**Access via stairway from Saloon bridge deck and by stainless steel ladder with solid teak steps from cockpit.Glazed door to Internal StairwayHydraulic Power SteeringElectronic Single Lever Controls for Engines and GearboxesDuplicate Engine InstrumentsBowthruster ControlsICOM HM162E DC VHFCommand MicRemote Anchor Winch ControlsRaymarine E80 Multifunction Display: Radar/Chart/Sounder/CameraRaymarine ST6001 Autopilot ControlCompassHelm Position IndicatorTrim Tab and Searchlight ControlsEcho Sounder and Speedometer/log repeaters with Sea temperature read-outDouble Helm SeatIntegral Fridge UnitCentral GriddleSink with Hot and Cold WaterSingle Co-Pilot SeatLarge J-shaped Upholstered Dining AreaStainless Steel Guardrails and GrabrailsGP Arch Supporting radar Antenna and Nav. Light MastGlove LockerCovered Chart TableMoulded Slip-Resistant Floor SurfaceMoulded Perspex Wind-Deflecting Screen with Full Grab Rail.Twin Dome TV + Matching Dome

ACCOMMODATIONSAft Cabin Fit out.Ocean Air Blinds to lower helm windows together with blind to side access door.Additional curtain to starboard cabin and portAdditional port hole to GalleyPart Overlay CarpetsCarpet Sections to floor and steps to upper helmSoap Dispensers and Towel holders fitted to bathroom.Sockets were fitted to bathing platform to accommodate Dinghy Chocks.Various Bedlinen available from Heirlooms (by separate negotiation)Additional Handrails to Flybridge**INTERIOR FURNISHINGS**Fully co-ordinating carpets, upholstery and curtainsHighly crafted joinery and wall panels in Satin Lacquered American Cherry and Eucalyptus.**MAIN**

SALOONSemi circular upholstered settee with storage underLow TableSideboard (incorporating Bar Unit;Cutlery Unit;Ice-maker and control panel for 12/24/240v domestic electrical circuits)Sony Flat Screen TV & DVD PlayerStainless Steel curved framed patio door to aft cockpitStereo Radio/CD PlayerTinted Glass to side windowsAdditional 240V Power PointsHalogen LightingAccess hatch to engines**GALLEY**4 Burner Electric Ceramic/Halogen HobMicrowave/Conventional Grill Oven UnitRefrigerator/FreezerTwin Sinks with hot and cold mixer tapAvonite Worktop with GrabrailConcealed Lighting240V Power PointsFire ExtinguisherStorage Cupboards and DrawersExtractor FanExtra Galley Port HoleSquadron Crockery**UTILITY ROOM (ACCESS FROM GALLEY)**Work Top with StowageClothes Washer/DrierRefrigerator/FreezerPull-out Ironing BoardStorage Cupboards240V Power PointAccess to Engine Room**MASTER STATEROOM**King Size (6'6" x 5'4") double bed with interior sprung mattressUpholstered BedheadTwin Wardrobes with Interior LightsDrawers under the bedHalogen ceiling and reading lightsHatch with flyscreen to foredeckTwin opening portholes with flyscreensFull length MirrorAccess to En Suite Shower/ToiletStereo radio/CD Player2 x twin 240V Power Points(Selection of designer tailor made fitted bedding (never used) available if required)**PORT AND STARBOARD GUEST CABINS**Twin 6'8" Single Beds with Interior sprung mattressesBedside table & LampWardrobe with Interior LightTwin opening portholes with flyscreensHalogen ceiling and reading lights2 x single 240v power points**EN SUITE AND GUEST TOILET/SHOWERS**Circular separate shower unitAutomatic shower tray pumpout systemFreshwater vacuum flush toilet wit seacocks to outletAvonite Vanity unit with wash basin and hot and cold pressurised waterOpening Stainless Steel porthole with flyscreenMirrored high level lockersHalogen Lighting240V Shaving PointComplete set of Bathroom Fittings**AFT CABIN**Twin single berthsWash room with toilet and handbasinStowage SpaceTwin Opening Portholes with FlyscreensFire ExtinguisherHalogen Lighting

NAVIGATION EQUIPMENTRaymarine E02013 E120 12.1" Colour DisplayRaymarine E02011 E80 8.4" Colour DisplayRaymarine E32042 RAY125 GPS SensorRaymarine 4KW 24" RadomeNavionics Chart2 x Raymarine E03006 CCTV PAI CameraRaymarine E15016 S3G Autopilot with 2 off ST6001 Displays2 x Colour 10M IR CameraKUH Track Vision 4 Satellite TV System with Matching DomeRaymarine Lifetag MOB System with 2 LifetagsDM300G FishFinderRaymarine RAY430 Loudhailer SystemICOM M505 DSC VHF with Command Mic on Flybridge

Kontakt



Verkäufer: gewerblich
Sunbird International

Andrea Martin-Wright
Telefon: 01294607074

<https://www.sunbirdyachts.eu>
andrea.martin@sunbirdyachts.eu

