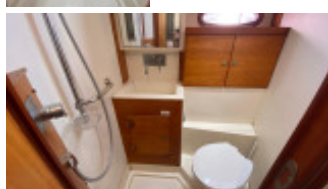
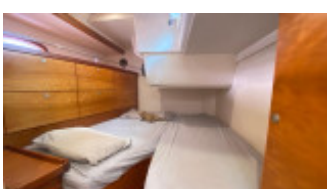
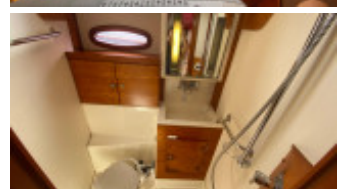
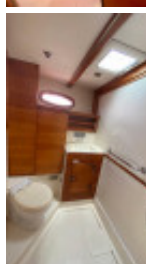
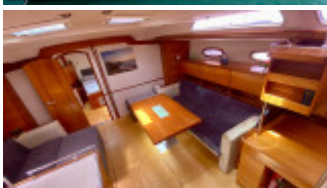


# Hanse 531

Hanse Yachts (DE), Segelyacht, Gebrauchtyacht, GD St George

€ 216.093,-

MwSt. nicht ausweisbar



# Details

Baujahr: 2004  
Erstwasserung: 0  
Länge: 16,00 m  
Breite: 5,00 m m  
Tiefgang: 0 m  
Gewicht: 41888 kg  
Motortyp: Yanmar 4JH3-HTE  
Motoranzahl: 1  
Kraftstoffart: diesel  
PS/kW: 100 / 74  
Frischwasser: 208 l  
Kraftstoff: 106 l  
WC/Nasszelle: 0  
Trailer: ohne Trailer

## Ausstattungen

## Beschreibung

This 2004 Hanse 531 is the very desirable shoal draft, owner's version. She is a modern and elegant performance cruiser with features like a large tender garage and advanced epoxy construction for increased performance, strength, durability, yet lighter weight, making her ideal for long-term cruising. With three spacious cabins all ensuite, she is well equipped with air-conditioning, water-maker, feathering propeller, bow thruster, self-tacking jib, and electric main halyard winch. Recent upgrades include ALL NEW 2025 electronics, 2023 Lithium batteries, 2023 solar panels, and custom solar arch with davits, making her a true off-grid, liveaboard yacht. Viewing highly recommended via our Grenada office.

### Accommodation

Hanse 531 owners cabin version offering up to six berths with a large owner's en suite forecabin with dressing area, two twin berth en suite aft cabins, two settee saloon layout, and a crew cabin/workshop forward. 6'6"+ headroom throughout, and further berths possible in the saloon and crew cabin if required. Her interior woodwork was also upgraded from new to light Cherry, and offers a huge amount of easily accessed storage. FORWARD OWNER'S CABIN - Forward cabin fitted with a large central double berth, vanity unit/dressing table with mirror, hanging lockers, a wide range of easily accessed storage, and access to the en suite. Excellent natural light and ventilation are provided by three opening hatches to the foredeck, three large fixed portlights, air-conditioning, and a high volume fan. EN-SUITE FORWARD HEADS - Fitted with an electric marine toilet, holding tank, washbasin, shower, and storage cupboards. Opening hatch and fixed portlight. SALOON - The light and spacious saloon consists of a large settee seating area to starboard extendable dining table, and a smaller settee to port with large footstool for comfort or additional table seating. Excellent natural light is provided by two opening hatches, four large fixed upper windows, and three fixed portlights. Further lighting is provided by a range of downlighters, spotlights, and an adjustable colour ambient lighting system. GALLEY - Aft to port is an L-shaped galley, ideally located and well designed for food preparation whilst underway, equipped with a Vango dual induction hob and Panasonic combination microwave/oven, large double sink, twin front accessed refrigerators, Dometic CFX 100l dual chamber portable freezer. and plenty of storage. NAVIGATION STATION - Located aft to starboard and fitted with a large chart table, navigation equipment, further instrumentation, ac and dc switch panels, and storage areas. PORT AND STARBOARD AFT CABINS - Each cabin has twin single berths (double berths infills could easily be made if preferred), plenty of storage and hanging lockers, two opening portlights to the cockpit, a fixed portlight, lighting, and each cabin with access to their own en suite. AFT EN SUITES - Aft to port and starboard, each fitted with a marine toilet, (Stb toilet is electric) holding tank, washbasin, shower, mirror, and storage. GENERAL EQUIPMENT - Factory upgraded real wood veneer Cherry interior with Maple sole boards and leather saloon upholstery (upholstery needs replacing). Open Air two-way blinds to all deck hatches. Twin unit Webasto diesel fired warm air heating system. Climma Compact 7 reverse cycle marine air conditioning and fans in all sleeping cabins. Pressurised hot and cold water system throughout including cockpit

shower via a calorifier with immersion coil. Watermaker providing up to 160l/hr

#### Mechanical Systems

Located under companionway, Yanmar 4JH3-HTE four-cylinder 100hp diesel engine. Freshwater cooled via heat exchanger. Single lever controls with electric start. Shaft drive via P-bracket to a bronze Brunton Autoprop feathering bronze propeller. Lewmar bow thruster with controls at starboard helm. \*There is a non functioning Fisher Panda generator (Compression Issue). The solar bank keeps up with all a family of 4 or 5 could use except perhaps the Air Conditioning which would need shore power.

#### Electrical Systems

8 x LiFePo4 12V=24V 640Ah Lithium house batteries - New 2023 1 x 12V AGM engine start battery 2 x 12V=24V AGM bow thruster battery 6 x 175 Watts flexi panels & 3 405 Watts solid panels. Total 2265 Watts - New 2023 1 x Silent Wind generator Victron Multiplus 2, 24V 3000Kva 70 amp battery charger/inverter Victron Lynx Shunt battery monitor 24V voltage 24V LED lighting throughout

#### Navigation Equipment

Compass at each helm B&G Zeus S3 chart plotter - New 2025 B&G Halo 20+ radar - New 2025 B&G autopilot B&G Triton 2 Triducer wind/speed/depth with display at each helm B&G wireless WS320 wind instrument B&G HS60 VHF B&G Class B with NSPL 5000 antenna splitter 24V deck and mast lights

#### Spars & Sails

Fractional double spreader rigged sloop. Aluminium keel stepped mast and boom. Mast steps. Solid kicker. Stainless steel standing rigging (new 2018) with Sail-Tec hydraulic backstay adjuster. Running rigging replaced as needed. Slab reefing mainsail with Harken roller bearing car system, lazyjacks, and stack pack. Headsail furling system. Lines led aft via clutches. 2 x Harken 53 self-tailing sheet winches. Harken 53 self-tailing electric main halyard winch to starboard. Harken 53 self-tailing halyard winch to port. Fully battened Cruisader mainsail with 3 reefs - white - average condition Furling self-tacking jib - North Sails - white - 2018 - restitched & UV cover June 2024 Spare self-tacking jib - lightweight - good condition 0.75oz Asymmetric spinnaker - snuffer - white - fair condition Blue water runner - Evlstrom - 2022 - good condition

#### Deck Equipment

50kg Mantis anchor with chain and warp 30kg Fortress anchor 74m 10mm Chain 100m Rode 24v Italwinch Devon 1500W windlass Stainless steel pulpit, pushpit and stanchions Stainless steel lifelines with gates on both sides Dropdown bathing platform with boarding ladder Dinghy davits and solar arch - New 2023 Grey zipped mainsail bag with lazyjacks - New 2024 Grey sprayhood, bimini with full enclosure, and wheel covers - New 2022 Pop-up cleats Frosted perspex cockpit table Hot and cold cockpit shower Various lines and fenders

#### Safety Equipment

Seago Sea Master ISO 9650-1 6 person life raft - Service due 2026 Seasafe coastal 4 man life raft - out of service date but included free with sale. Various flares - some may be out of date 1 x Crew safer life vest Fire extinguishers - May need servicing 3 x Fire blankets Horseshoe lifebuoy Danbuoy Inflatable Jonbuoy MOB recovery system EPIRB (expires June 2028) SeaSafe Pro-Light 6 man liferaft (new 2018, due first service) 1 x Manual and 3 electric bilge pumps Emergency tiller

#### Additional Equipment

2.7mYam Taf 270 inflatable dinghy - New 2022 - Fair condition Mercury 3.5hp outboard - Serviced April 2025 Starlink gen 2 Iridium GO - (Will need to buy plan) Hydraulic Water Works watermaker 24V - 150l-200l p/h 2 x 7000BTU Clima 240V air conditioning 2 Webasto 24V diesel heating Washing machine - small 3kg - tired Spare 18' fixed prop

#### Construction

This Hanse 531 was built by Hanse Yachts in 2004 to a Judel & Vrolijk design. White GRP hull with white superstructure, and teak laid decks, cockpit seats, sole, and drop down bathing platform. Cast iron shoal draft fin keel. Spade hung rudder with twin hide-bound steering wheels. Large crew cabin/workshop/sail locker forward. Large self draining cockpit with cockpit lockers. Hot and cold cockpit shower. Dropdown bathing platform concealing a huge tender garage with ample space for a large dinghy and other equipment. To reduce weight, improve performance, as well as increased strength and longterm durability, Hanse used an epoxy sandwich vacuum system for the hull construction of the Hanse 531 instead of a traditional gelcoat. Last Anti-fouled June 2024. She was affected by a lightning strike in August 2024. Everything including rig was checked by a professional surveyor at the request of the insurance company and all electronic damage were replaced under insurance.

#### Disclaimer

The company normally acts as brokers for the vendor who unless otherwise stated is not selling in the course of a business. Whilst every care has been taken in the preparation of these particulars the correctness is not guaranteed and they are intended as a guide only and do not constitute a part of any contract. A prospective buyer is strongly advised to check these particulars and where appropriate and at his own expense to employ a qualified marine surveyor to carry out a survey and/or to have an engine trial conducted which if conducted by us shall not imply any liability on our part. General note on safety equipment: Any safety equipment such as liferaft, fire extinguishers and flares etc., are usually personal to the current owner(s) and if being left on board as part of the sale of a used vessel, may require routine servicing, replacement, or changing to meet a new owner's specific needs.

# Kontakt



Verkäufer: gewerblich

**Clarke & Carter Interyacht Ltd**

Clarke & Carter Interyacht Ltd

Telefon: +44 (0)1473659681

Telefax: +44 (0)1473659758

<https://www.clarkeandcarter.co.uk/>

[suffolk@clarkeandcarter.co.uk](mailto:suffolk@clarkeandcarter.co.uk)