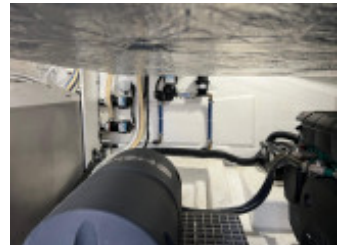


# Galeon 425 HTS (New)

Galeon (GB), Power, Second-hand yacht, Deutschland Nähe Bremen

€ 589.000,-

EU taxed, VAT can't be stated separately, VAT paid, VAT included



# Details

Year built: 2022  
Launching: 2023  
Condition: very good  
Length: 13,16 m  
Beam: 3,90 m m  
Draught: 1,09 m  
Weight: 12500 kg  
Material Hull: GRP  
Material Assembly: GRP  
Drive:  
Engine type: Volvo Penta D4-270 EVC DPI  
Number of engines: 2  
Fuel type: Diesel  
HP/kW: 2 / 2  
Steering: Electric  
Operating hours: 166  
Fresh water tank: 450 l  
Holding tank: 260 l  
Fuel: 950 l  
Cabins: 2  
Bunks: 4  
Head room/wet lockers: 2  
Ship's steering: Hydraulic steering  
Trailer: without Trailer  
Previous owners: 1 previous owner

## Equipment

### Fixtures & Cabin Layout

Bow cabin, Owner's cabin, Equipment rack, Interior navigation station, Salon, Teak swimming platform, Teak on walkway, Teak cockpit  
Electrically operated windows on the port and starboard sides of the saloon (large windows) at the height of the helm station.  
The tender garage is used as a large storage compartment with access from the cockpit and the platform and a service hatch to the engines.  
The owner requested this variant because he preferred a U-shaped rear bench seat with storage compartments and a table in the cockpit and plenty of garage storage space to a tender garage.  
Aluminium cockpit door with a manual drop-down element between the saloon and cockpit, electric side windows in the saloon on the port and starboard sides at the height of the helm,

### Pantry

Refrigerator, Electric hob, Microwave, Sink unit  
Electric cooker, induction, 230V, two burners, 130 litres. Refrigerator in the galley.  
additional refrigerator in cockpit (49 L)

### Technology

12V socket, 220V socket, Anchor, Anchor locker, Battery, Battery charger, Bilge pump automatically, Electric bilge pump, Mechanical bilge pump, Electric Bow windlass, Pressure water pump, Inverter, Shore power 230V, Windshield wiper with washer, Yacht controller  
Control Package: Trim Computer, Speed Control; Single Lever Mode;  
Rim Assistant for Z-drive DPI  
Interface NMEA 2000

### Navigation

Autopilot, Echo sounder, Fishfinder, Plotter, Compass, Rudder angle indicator, Sumlog, VHF radio, AIS activ  
, Volvo Penta Digital 7-inch display, Raymarine 1x Axiom12RV chart plotter/fish finder, Raymarine RAY 91AIS VHF  
radio and DSC, Raymarine p70RS autopilot, Fusion sound system with upgrade and amplifier and multiple speakers,  
rudder indicator, TV in owner's cabin, TV in cockpit

### **Safety**

Fire extinguisher, Fire extinguisher equipment, navigation lights, Guard rails, Signal horn, Engine alarm, Night lighting

### **Awnings & covers**

Camper cover, Windshield wipers, Windshield cover  
Fully enclosed cockpit canopy with individual opening elements  
two window covers.

### **Accessories**

2. Refrigerator, Anchor chain, Swimming ladder, Swimming platform, CD player, Cockpit table, Deck shower hot/cold,  
Deck hatch, Pressure washer, TV, Fender, Fender holder, Mooring line, Stern shower hot/cold, Stern door to bathing  
platform, Heating, Air condition, Radio, Satellite antenna, Sun cushion on the bow, Electric/hydraulic trim tabs, Anti-  
fouling, Water heater, other extras, Bow cushions, Cockpit cushions, Speaker, Cushions, Sunbeds, Refrigerator on  
deck, Boiler, Bow thruster with remote control, Stern thruster with remote control  
Upgraded sound system with amplifier and multiple speakers, TV in owner's  
cabin, TV in cockpit,

Zipwake automatic trim tabs

20,000 BTU air conditioning for the lower deck

LED lights in the cockpit and on the bathing platform

## **Description**

The Galeon was built in September 2022, according to the hull number a 2023 model, and was launched for the first time in spring 2023.

This Galeon 425 HTS has been configured by the owner with a larger  
owner's cabin and a comfortable  
bathroom

instead of an L-shaped sofa with a table in the same place.

The interior is tastefully coordinated – it

couldn't be more perfect!

We took a look at the Galeon 425 HTS yesterday and saw a Galeon that is as good as new, with no ifs or buts.

This Galeon 425 HTS is equipped as follows:

Bow and stern thrusters with joystick, Dockmate remote control for engines, bow and stern thrusters and electric  
anchor winch, hot air heating with additional outlet in the cockpit,

20,000 BTU air conditioning for the lower deck, electric anchor winch, electric GRP sliding roof, automatic Zipwake  
trim tabs, The 'tender garage' is used as a large storage compartment, with access from the cockpit and from the  
platform and a service hatch to the engines.

The owner ordered this variant because he preferred a U-shaped rear bench seat with storage compartments and  
a table in the cockpit and plenty of garage storage space to a tender garage.

Aluminium cockpit door with a manual drop-down element between the saloon and cockpit, electric side windows in  
the saloon on the port and starboard side at the height of the helm,

40 L hot water system, hydraulic control, complete waste water system with electric toilet and macerator, 230 V

2-burner induction hob, microwave, 130 L refrigerator in the galley, Shower in both wet rooms, curtains in the saloon, blinds in the saloon, middle cabin and bow cabin, wooden floor in the saloon, carpet for the saloon, ambient LED lighting, additional 49 L refrigerator in the cockpit, Teak on bathing platform, teak in cockpit, teak on side decks, shower on bathing platform, GRP cockpit table, saloon convertible into a bed, windscreen wipers with wash function, sun cushions on foredeck, fender lockers, camper cover, 2x windscreen covers, covers for exterior cushions, 2x dummy SAT TVs, Volvo Penta Digital 7-inch display, Raymarine 1x Axiom12RV chart plotter/fish finder, Raymarine RAY 91AIS VHF radio and DSC, Raymarine p70RS autopilot, Fusion sound system with upgrade and amplifier and multiple speakers, rudder indicator, TV in owner's cabin, TV in cockpit, 230V inverter - 3000W, Raymarine rear view camera CAM300 (day and night), tarpaulin for bow cushions, shore connection also in the bow and much more!

## Contact



Vendor: commercial  
**bcm-yachtsales GmbH**

Herr Dirk Michels  
Phone: +49.(0)251 / 39 46 92 39  
Fax: +49.(0)251 / 39 46 92 35  
Mobile: +49.(0)151 / 14 23 53 23

<https://www.bcm-yachtsales.de>  
[info@bcm-yachtsales.de](mailto:info@bcm-yachtsales.de)