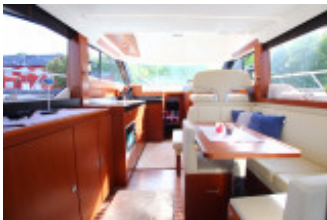
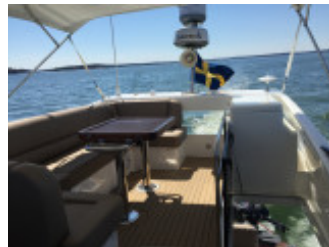


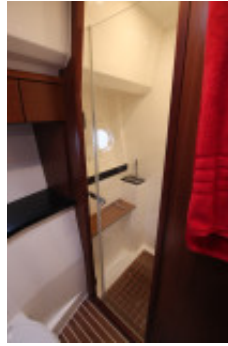
# Bavaria Viertes 420 Fly (New)

Bavaria (DE), Motor, Yate usado, Schweden Stockholm

€ 419.000,-

Impuestos pagados en UE, VAT paid, IVA incluido





## Detalles

Año construcción: 2014

Lanzamiento: 2014

Estado: bien mantenido

Eslora: 13,93 m

Manga: 4,20 m m

Calado: 0,77 m

Peso: 12000 kg

Material Casco: Poliéster

Material Estructura: Poliéster

Drive:

Tipo de motor: Volvo Penta D6 370 EVC

Cantidad motores: 2

Tipo de combustible: Diesel

CV/Kw.: 2 / 1

Horas de servicio: 600

Depósito de agua dulce: 410 l

Combustible: 1200 l

Cabinas: 3

Camarotes: 6

Cuarto de WC/celda sanitaria: 2

Propietarios anteriores: 2ra. Mano

## Equipo

## Descripción

**BAVARIA VIRTESS 42 VOLVO PENTA D6-370 EVC JOYSTICK CONTROL 2015 FOR SALE IN SWEDEN!**

The 2015 Bavaria Virtess 420 Flybridge offers an unusually spacious layout with three proper cabins and two bathrooms. The large flybridge provides plenty of space for socializing and relaxing, while the well-thought-out level of equipment makes life on board comfortable and easy. The combination of fuel-efficient operation and smooth handling makes the boat well suited for both longer holiday trips and shorter excursions.

This example that is sold new in Germany and imported to Sweden by the current second owner is very well maintained and in very good condition both cosmetically and technically. The boat is under winter storage in shrinkwrap fully winterized outside in Stockholm and can be delivered in the water in Stockholm fully season ready in may 2026.

Specification:

Model year: 2015

Length: 13.93m

Width: 4.21m

Depth: 0.77m

Weight: 12.000kg

Freshwater tank: 410l  
Diesel tank: 1.200l  
Cabins: 3  
Toilets: 2  
Number of owners: 2  
Engine:  
2x Volvo Penta D6-370 EVC  
Model year: 2014  
Hp: 2x370  
Running hours: Approx. 600h  
Drive: Volvo Penta DPH with joystick control  
Bow thruster: Sidepower  
Trim tabs: Volvo Penta electric/hydraulic  
User manuals in English & German follows with the boat  
Navigation:  
Log - Volvo instruments  
Echosouynder - Volvo instruments with depth gauge  
GPS Plotter - Garmin GPS Map 7012 (2x)  
Navigation chart, Baltic Sea + Denmark  
Autopilot - Garmin GHP 10 V For Volvo Penta  
VHF - Garmin (2x)  
Radar - Garmin GMR 18 X HD  
AIS - Garmin  
LED spotlights - 2 forward and 2 aft  
Compass (2x)  
On-board camera  
Rear camera  
Electronics:  
Fusion sound system with power amplifier and subwoofer for TV, Music in saloon, aft deck and flybridge - Controls in saloon, cockpit and flybridge.  
Separate Fusion system in owners cabin.  
Saloon - 2 speakers + Fusion subwoofer  
Aft deck - 2 speakers Fusion.  
Flybridge - 2 speakers Fusion.  
Owners cabin - 2 speakers + Fusion subwoofer.  
Electric windlass in bow with counter at cockpit and on fly  
Electric windlass in the stern with free fall  
Starter battery 2x95A (maintenance charged)  
Consumer battery 2x140A AGM (maintenance charged)  
Inverter 2x200A AGM 2019 (maintenance charged)  
Shore power 230V with circuit breaker  
3x separate battery chargers  
Portable solar panel socket  
Inverter Mastervolt Masscombi  
TV - One in the saloon and one in the owners cabin  
TV antenna, Parabol Trac Vision TV3 and one for ground-mounted  
LED lanterns  
LED lighting on deck, aft deck, flybridge and underwater lighting.  
Interior & Comfort:  
Upholstery - Inside: Leatherette Beige. Aft deck and Flybridge: Suntex Dove  
Diesel heaters Eberspächer (2x)  
Water heater Sigmar 40l - Both electric and engine heating  
Stove - Electric ceramic hob 2 zones  
Refrigerator - With freezer compartment Waeco 110l  
Refrigerator in galley and one on flybridge  
Sea water tap by galley  
Electric toilet  
LED lighting everywhere  
Exterior:  
Aft canopy (black)

Biminitop on flybridge  
Solid teak cockpit table on aft deck + fly  
Coach cushions, upholstered sofas Suntex Dove  
Shower on bathing platform  
Midship grabs  
Bowsprit with teak step & recessed bowladder  
Swing davit for lifting dinghy onto bathing platform  
Winter cover/harbour canopy for flybridge  
Cover for sofas, table and steering position on flybridge  
Safety:  
Life raft  
Manual bilge pumps  
Electric bilge pumps  
Mooring ropes  
Fenders

Prices are subject to change.  
There is a possibility that the price may need to be adjusted.

## Contacto



Vendedor: comercial  
**bcm-yachtsales GmbH**

Herr Dirk Michels  
Teléfono: +49.(0)251 / 39 46 92 39  
Fax: +49.(0)251 / 39 46 92 35  
Móvil: +49.(0)151 / 14 23 53 23

<https://www.bcm-yachtsales.de>  
[info@bcm-yachtsales.de](mailto:info@bcm-yachtsales.de)