

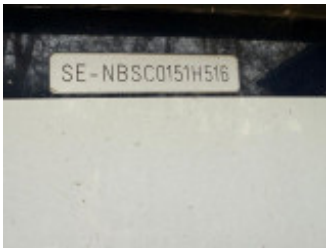
Nimbus 365 Coupe (Sold)

Nimbus (SE), Motor, late usado, Deutschland Nähe Osnabrück

€ 247.500,-

Tributação da UE, VAT can't be stated separatly, VAT paid, IVA incluído





Detalhes

Ano de construção: 2015
Lançamento: 2016
Estado: muito bom
Comprimento: 11,56 m
Largura: 3,50 m m
Calibrador: 1,14 m
Bordo livre: 1,95
Peso: 7000 kg
Material Casco: GRP
Material Estrutura: GRP
Drive:
Tipo de motor: Volvo D4
Número de motores: 1
Tipo de combustível: Diesel
CV/kW: 1 / 1
Operação: Eléctrico
Tanque de água potável: 270 l
Água não potável: 120 l
Combustível: 700 l
Camarotes: 2
Beliches: 4
Número de beliches extra: 2
Quarto de WC / sala sanitária: 1
Trailer: without Trailer
Proprietários anteriores: 2 previous owners

Equipamento

Instalações e divisão

Camarote do proprietário, Camarote de convidados, Prateleira de equipamento, Posto de comando interior, Salão, Plataforma de banho em teca, Prancha de embarque em teca, Proa em teca, Cockpit em teca
Teak on the foredeck and starboard gangway

Copa

Caixa de arrefecimento, Placa de fogão em cerâmica, Placa de fogão a gás, Compressor, Enxaguar
Refrigerator drawer from Waeco and the longitudinal sofa in the saloon

2-burner gas ceramic hob

Tecnologia

12V soquete, 220V soquete, Âncora, Caixa de âncora, Battery, Carregador de bateria, Bilge pump automatically, Bomba de porão electrónica, Molinete de proa eléctrico, Pressure water pump, Inverter, Conexão à terra a 230 volts, Limpa pára-brisas com arruela

220V shore power connection with Mastervolt charger and Mase Combi 2200 Watt inverter, 8 batteries

Navegação

AIS activ, Ecosonda, Plotter with GPS, Bússola, Axiómetro do leme, Velocímetro electrónico, Rádio VHF Simrad navigation with NSS 12" touchscreen chart plotter and Navionics XL9, 46XG Gold micro SD card, radio including AIS, rudder position display in plotter,

Segurança

Luzes de navegação, Parapeito de muralha, Buzina de sinal, Faróis de busca com ajuste electrónico

Mapas & encerado

Toldo de estacionamento, Encerado completo, Encerado do pára-brisas

Markilux Blue cockpit cover, window covers, winter cover, bow sun cushions, fenders and lines.

Acessórios

Torneira de três vias, Escada de banho, Plataforma de banho integrada, Propulsor de proa, Instalação de pressão hidráulica, Leitor de DVD, Defesa, Cabo de acostar, Chuveiro de popa quente/frio, Stern thruster, Comporta de popa para a plataforma de banho, Aquecimento, Microcommander, Antena de SAT, Fossa séptica, Almofada de sol na proa, Estabilizadores el./hidr., TV, Antena de TV, Pintura submarina, Equipamento de água morna Sidepower SE 60 bow and stern thrusters, electric anchor winch with chain and anchor, railing passage, hydraulic trim tabs, searchlight with remote control, 220V shore power connection with Mastervolt charger and Mase Combi 2200 Watt inverter, eight batteries, LED lighting throughout the vessel and dimmer in the saloon

Volvo Penta Trimcomputer,

Volvo Penta engine data networking, echo sounder and log,

TV with satellite antenna in the owner's cabin, Retractable television in the lounge DVD/DVBT and antenna,

Bluetooth connection, digital radio via satellite antenna, ,

electrically lowerable saloon table with intermediate cushion,

electric sunroof with sun blinds,

Eberspächer hot air heating with defroster for windscreen, hot water system

via engine + 220 volts,

galley with gas cooker, 12/220 V refrigerator, Refrigerator drawer from Waeco and the longitudinal sofa in the saloon

spacious bathroom with separate shower, electric WC, waste tank with electric emptying

and deck suction, stern shower, hot/cold,

Descrição

Nimbus 365 Coupé - Year of manufacture 2015 / Model 2016

Length: 11.56 m - Width: 3.45 m - 2 cabins - Berths 4 + 2 - 1 bathroom with separate shower

1 x Volvo Penta D4-260 'Welle' (1x 260 hp) approx. 690

Maximum speed: 20 kn

Lake Constance registration possible!

Clearance height with mast down 3.10 m, without mast 2.60 m

Well-maintained owner's boat, equipped as follows:

Sidepower SE 60 bow and stern thrusters, electric windlass with chain and anchor,

railing passage, hydraulic trim tabs, searchlight with remote control,

220V shore power connection with Mastervolt charger and Mase Combi 2200 watt inverter,

eight batteries, LED lighting throughout the boat and dimmer in the saloon

Volvo Penta Trimcomputer, complete Simrad navigation with NSS 12" touchscreen chart plotter and Navionics XL9 chart, 46XG Gold Micro SD, radio including AIS, rudder angle indicator in the plotter,
Volvo Penta engine data networking, echo sounder and log,
TV with SAT antenna in the owner's cabin, TV in the saloon retractable , DVD/DVBT and antenna,
Bluetooth connection, digital radio via SAT antenna,
teak on bathing platform, in cockpit and on starboard gangway, bow area and bowsprit, saloon table electrically lowerable with intermediate cushion,
electric sunroof with sun blinds,
Eberspächer hot air heating with defroster for windscreen, hot water system
via engine + 220 volts,
galley with 2-burner gas ceramic hob 12/220 V refrigerator, Refrigerator drawer from Waeco and the longitudinal sofa in the saloon
spacious bathroom with separate shower, electric toilet, waste tank with electric emptying
and deck suction, stern shower, hot/cold,

Markilux Blue cockpit cover, window covers, winter cover,
bow sun cushions, fenders and lines.

Contato



Vendedor: comercial
bcm-yachtsales GmbH

Herr Dirk Michels
telefone : +49.(0)251 / 39 46 92 39
fax : +49.(0)251 / 39 46 92 35
móvel : +49.(0)151 / 14 23 53 23

<https://www.bcm-yachtsales.de>
info@bcm-yachtsales.de