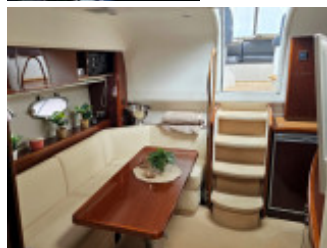


Princess V45 (New)

Princess (GB), Motor, Brugt yacht, Schweden Nähe Stockholm

€ 337.000,-

EU-beskattet, Moms. dokumenteres, VAT paid, Moms inkluderet





Detaljer

Konstruktionsår: 2010
 Første søsætning: 0
 Stat: velholdt
 Længde: 14,35 m
 Bredde: 3,99 m m
 Dybgang: 1,07 m
 Ståhøjde: 2,07
 Vægt: 13000 kg
 Materiale Skrog: GRP
 Materiale Konstruktion: GRP
 Drive:
 Motorstype: Volvo Penta D6-370 EVC
 Antal modeller: 2
 Brændstoftype: Diesel
 Hk/kW: 2 / 1
 Antal timer i drift: 430
 Ferskvandsbeholder: 394 l
 Brugsvand: 190 l
 Motorbrændstof: 1000 l
 Kabiner: 2
 Køjer: 4
 WC-rum/vådelement: 2

Udstyr

Udførelse og skillerum

All details on request

Beskrivelse

Very impressive Princess V45 Volvo Penta D6-370 EVC 2010 for sale in Sweden

- Rare opportunity to secure a very beautiful timeless Princess V45!
- Running time only 430 hours since new!
- The boat has ever been in south of Europe!
- Delivery of the boat within & outside Europe is offered to good price!
- VAT proof exists & can be showed for potential buyer's!

Price:

337.000 EUR (VAT paid / statable)

Description:

Are you looking for a larger hardtop of about 45 feet in the absolute premium class and have 300 - 350 thousand EUR in budget? Maybe this very nice well-upgraded Princess V45 year 2010 with the large powerful Volvo Penta D6-370 EVC engines with running time of only 430 hours since new, Volvo Penta joystick control, new electric soft-top, new aft canopy, new fine upholstery in durable Silvertex with embroidered Princess logo, new 12" Raymarine Axiom plotter/multi-screen, newer Raymarine radar digital 4kW, dual diesel heaters Eberspächer, generator 7kW etc. could be the right boat for you?

The layout of this well-documented Princess V45, which was sold new in England and has never been in south of Europe, is optimized for socializing, fun and longer boating holidays with a high level of comfort on board. The inviting cockpit with its new large electrically opening sunroof in the hardtop and the large sundeck in the stern on top of the boat's electrically opening garage with electric winch for storing a larger rib, offers plenty of space for a larger party. The large sofa group with dining table for 6 people in the rear cockpit with wet bar with electric stove, sink with hot & cold water and a large fridge/freezer on the opposite side of the sofa group and the forward 2-seater passenger sofa/sunbed on the port side of the boat's wheelhouse with double captain's seats with fold-down front seats and electrically opening side window, form a perfect cockpit that none of the Princess V45's competitors surpass.

Sturdy steps from both the port and starboard sides of the boat's bathing platform lead you easily and safely up to the boat's side deck with sturdy grab rails along the hardtop sides. On the foredeck there is a large inviting sunbed with comfortable sun cushions for 3 persons. In the bow there is an open pulpit with grab rails and a bowsprit with teak steps and a bow ladder for easier boarding and disembarking.

The space that the boat's lower deck offers is unbeatable considering the type, size and yearmodel of the boat. On the port side in the exclusively decorated salon with the bright modern interior in light oak is the boat's large L-shaped kitchen with plenty of storage and shelving. On the starboard side is the boat's inviting salon with a U-sofa with a height-adjustable teak table for 5 people that can easily be made into an extra double bed when you have several guests staying overnight on board.

Before the kitchen on the port side there is an entrance to the boat's large Guest cabin with double single beds, plenty of storage and its own toilet with an electric flush toilet and shower cabin. The boat's Master cabin in the forepeak has a large double bed, plenty of storage and its own bathroom with an electric flush toilet and a separate shower cabin with a bench seat.

This 2010 Princess V45, which is in impressive cosmetic condition and shines like a mirror in the sun, is being shown in Västerås (west of Stockholm) and is being sold fully season ready/Turn Key Ready with a guarantee that its drivelines and all major systems are fully functional at the time of the boat's sale and delivery. We offer delivery of the boat within and outside Europe. Ask us for a quote for transport of the boat to your home port.

Maintenance:

The boat has always been stored indoors in a heated hall during the winter. New polishing & waxing of the boat's hull & deck spring 2026 (previous polishing & waxing spring 2025). New teak treatment spring 2026. Latest engine service autumn 2025 (change of engine oil, all filters incl. crankcase ventilation filter, zinc anodes, impellers & drive belts). Latest drive service 2025 (change of gear oil, o-rings & zinc anodes). Starboard drive changed to new drive after review of both drives in 2024. Port drive repacked & new drive bellows mounted on both drives.

Specification:

Year: 2010

Country of origin: England

Sold new: England (imported to Sweden from there)

Ship registered: No

Hull type: Planing

CE-class: B/Maximum 12 persons

Location: Västerås (west of Stockholm)

Water: The boat's home port is in fresh water (lake)

Previous owners: 3

Colour: White with deep blue hull (hull in very good condition/high finish)

Interior: Cherry glossy

Length: 14.35m
Width: 3,99m
Depth maximum: 1.07m
Weight: 13 tons
Fuel: 1000 liters
Fresh water tank: 394l
Septic tank: 190l
Cabins: 2
Beds: 4+2
Seats: 10+5
Toilet/Shower: 2/3
Engine: 2x Volvo Penta D6-370 EVC
Hp: 2x370
Running time: 430 hours
Drift: 2x Volvo Penta DP-H
Cooling: Fresh water
Cruising speed: 26 kn
Maximum speed: 32kn
Fuel consumption approx. 90l/nm in cruise

Exterior/hull/deck equipment:

New aft canopy (black) 2025
Electric canopy with new soft-top in the HT (white) 2025
Windshield covers (transparent from the inside) for windshield & front side windows (black)
Teak on bathing platform, steps & in cockpit (very good condition)
Electric windlass with galvanized anchor & 40m chain in bow - controls on foredeck & in wheelhouse
Anchor box with storage for 4 fenders in bow
Open pulpit with grab bars & bowsprit with teak step & bow ladder in bow - For easy boarding & disembarking
Sundeck with sun cushions for 3 persons (beige) on foredeck
Stainless cleats & grab rails
Wide side decks & grab rails along the sides of the HT - For safe movement on deck
Electric searchlight on the HT - Remote controlled from wheelhouse
Digital TV antenna
Windshield wiper with fresh water wash (2x)
Navigation lights
Bow thruster Side-power 75kgf
Hydraulic trim tabs
Fender holders (4x)
Fenders (6x)

Cockpit & bathing platform equipment:

Large sundeck with new sun cushions in Silvertex (anthracite grey) 2025 with raised headrests for 3 persons in the stern
Electrically openable garage for rib with electric winch under sundeck
Integrated bathing platform with recessed bathing ladder
Shower with hot & cold water at bathing platform
Electric windlass with stainless anchor & leaded anchorline in the stern - Remote controlled + remote control
Grid in stainless & plexiglass from bathing platform into cockpit
U-sofa with new cushions with embroidered Princess logo in Silvertex (anthracite grey) 2025 & dining table with cup holder for 6 persons in rear cockpit
Storage rooms under the U-sofa
Wet bar with sink with hot & cold water, electric hob Eno, fridge/freezer 12V & cup holder in cockpit
L-sofa with new cushions in Silvertex 2025 for 2 persons alt. sun lounger for 1 person port side of the wheelhouse
Cabinet with 230V shorepower outlet
Shorepower cable
Cabinet with diesel cranes & manual bilge pump
LED deck lighting (blue) in cockpit & at the bathing platform
Speakers in cockpit (4x)
Boat hook
Mooring ropes (6x)

Wheelhouse equipment:

Newly upholstered double driver's seats in Silververtex 2025 with fold-down front seats
Defroster/heater in wheelhouse
Hydraulic steering
Electrically opening side window
Engine instrumentation incl. fuel gauge
Electronic throttle control Volvo Penta EVC
Joystick Control Volvo Penta
Electric drive trim Volvo Penta with digital level indicators
Joystick bow thruster Side-power
Digital engine data Volvo Penta EVC
Controls for windshield wipers, bilge pumps, battery interconnection, windlass, electric sunroof, etc.
Control panel with digital level indicators for trim tabs
Rudder angle indicator
GPS plotter/multi-screen Raymarine Axiom 12" 2025
Radar Raymarine digital 4kW 18" dome
Autopilot Raymarine ST6002 Smart Pilot
Sonar Raymarine ST60+
Log Raymarine ST60+
VHF radio Simrad with DSC
Compass
Stereo bluetooth
Subwoofer 10" with power amplifier
Control panel with warning system for automatic fire extinguishing system in engine room
Fire extinguisher
Cup holder

Interior/salon/kitchen equipment:

Large L-shaped kitchen with Avonite countertop, double sinks with hot & cold water, electric hob 3 zones, Bosch convection/microwave combi oven with grill, large refrigerator with freezer compartment, ice maker, 230V socket, waste bin, openable hull vents (2x), blackout blinds, cabinets, drawers & serving counter
Level gauge for fresh water tank
Speakers in saloon ceiling (2x)
Salon with U-sofa with height-adjustable table for 5 persons, Smart TV Andersson 40" (wall-mounted), 223V socket, storage cupboard, openable hull vents (2x) & blackout curtain
U-sofa can be converted into extra double bed (insert cushion available)
Exhaust from diesel heater
Closed Master cabin in the forepeak with large double bed with coil mattress, exhaust from diesel heater, opening hull vents (2x), blackout curtains, wardrobe, drawers, dressing table, shelving, skylight top hatch with roller blind, 230V socket, ceiling & reading light
Private bathroom to Master cabin with electric flush toilet, separate shower cubicle with bench seat, exhaust from diesel heater, opening hull vent & blackout curtain, cupboard, mirror cabinet & 230V socket
Enclosed Guest cabin amidships with double electrically adjustable single beds (for conversion to large double bed), exhaust from diesel heater, opening hull vents (2x), blackout curtains, wardrobe, stowage cupboard, drawers, shelving, 230V socket, ceiling & reading light
Private toilet in Guest cabin with electric flush toilet, shower cubicle, exhaust from diesel heater, opening hull vent, blackout curtain, cupboard, mirror & 230V socket

Engine room/below deck equipment:

Generator Cummins Onan 7kW (running time approx. 160h)
Diesel heater Eberspächer D4 & D5 (2x)
Water heater - Connected to engine for hot water while underway
Septic tank with emptying overboard & via deck valve
Shorepower 230V with circuit breaker & polarity control
Battery bank with 6x batteries, of which 2x new consumer batteries gel 2024
Battery charger Mastervolt Chargemaster 12V/100Amp 3 channel
Battery charger Victron 12V/30Amp (2x)
12V ship power
Lighting in engine room

Automatic fire extinguishing system in engine room
Engine room fan
Double fuel tanks with transfer channel
Automatic bilge pumps (2x)
Manual bilge pump with crane system & multiple suction Points

Other:

Manuals & lots of documentation incl. VAT proof available for the boat!

The information in this ad is believed to be correct but the buyer is advised to verify this upon inspection. Photographs of the item may show items that are not included in the purchase

Kontakt



Leverandør: kommerciel
bcm-yachtsales GmbH

Herr Dirk Michels
Telefon: +49.(0)251 / 39 46 92 39
Fax: +49.(0)251 / 39 46 92 35
Mobile: +49.(0)151 / 14 23 53 23

<https://www.bcm-yachtsales.de>
info@bcm-yachtsales.de